

# GRAESSER BROS.



*Join us for our 14th Annual Production Sale*

**MONDAY,**

**FEBRUARY 20, 2023**

**Winner Livestock Auction, Winner, SD**

*Sale at 1:00 PM CST*

**Lot  
1**



**Lot  
3**



**Brookdale Mogul... continuing to push to the top!!**

**Derek Graesser**  
605.830.0788

**Rod Graesser**  
605.835.8039 or  
605.830.2029





# Cattlemen,

W  
E  
L  
C  
O  
M  
E

On behalf of the Graesser Bros. families, we would like to invite you to our 14th annual bull sale. It has been quite the past 12 months to say the least. These cattle certainly do have a resiliency in them to endure through the tough times. With extended drought through summer into late fall and now 70 plus inches of snow this winter, the bulls have acclimated and overcome. We hope everyone has fared well and we want to thank you for your determination. We believe green grass and brighter days are ahead.

We creep feed the last month before weaning to get them acclimated to feed and have continued with a growing ration after weaning, allowing the bulls to attain the longevity and fertility that you, the commercial cattleman, need. There seems to be enough obstacles and trying times out there without artificially adding to any potential problems. The bulls will be semen checked by sale day and you will be provided a supplement sheet with scrotals.

As you will notice, some of our bull bred sires have performed just as well, if not even outperforming the AI sired bulls. Brookdale Mogul has sired another great group of bull calves and the first calf crop of females are performing exceptionally well as mothers with great udders and mothering instincts. GB Generation G12H was the Lot 3 bull of our 2021 sale. His offspring look to be performing just as well or even better than him!

Up for offering will be 62 yearling Angus and 5 Sim-Angus. Angus bulls were DNA tested and will have genetically enhanced EPDs along with parentage results. By using genomics, in our opinion, we are getting enough added accuracy on our EPDs to forgo having to do any ultrasounding.

We feel that adding longevity through cattle fertility, structural soundness, and genetic selection plays a major role in keeping our customers thoroughly satisfied. The bulls are not fed in a way that will limit their ability to get out and do their job, which is to produce genetically superior offspring.

We have not changed anything as far as our guarantee and discounts on sale bulls. Additional \$100 discount if you haul your own bull(s) on sale day. Otherwise, we would like to start deliveries the first part of April, weather pending of course. If you have any further questions, or would like to view the bulls, you are more than welcome to visit the ranch anytime before sale day. We do encourage you to see the bulls in their own environment.

Thank you buyers, bidders, and everyone who has supported Graesser Bros. We look forward to seeing you all on Monday, February 20th, at the Winner Livestock Auction. Sale time is set for 1:00 PM. Come early, see the bulls, and have a meal with us!



## The Graessers





Join us for our 14th Annual Production Sale

**Monday,**

**February 20, 2023**

**Winner Livestock Auction,**

**Winner, SD**

**Sale at 1:00 PM CST**

**Sale Location:**

Winner Livestock Auction ..... 605-842-0451  
31690 Livestock Barn Road, Winner, SD 57580

**Auctioneer:** Cody Moore ..... 605-222-1453

**Sale Consultant:** Joseph Kvigne ..... (605) 670-1785

**Livestock Representatives:**

Don Ravellette, Cattlemen's Invite ..... 605-685-5147  
Curt Westland, Tri-State Livestock News ..... 605-210-3329  
Tate Williams, Independent ..... 605-999-0018  
Jack Sieban, Nutritionist ..... 605-660-9975

**Lodging Reservations:**

Holiday Inn Express, Winner, SD ..... (605) 842-2255

**Herd Health:**

We have an aggressive herd health program by Animal Clinic, Winner, SD. Dr. Swift will fertility test the sale bulls in this year's sale, and will be available sale day to answer any questions.

**Brand Inspection Documents:**

All bulls will be accompanied by proper brand inspection papers at time of shipment. A brand inspector will be available sale day.

**Volume Discount:**

Will be offered starting at three bulls - 3%; and increasing 1% for each additional bull up to 10 bulls - 10% maximum discount.

**Sight Unseen Policy:**

Graesser Bros. will guarantee complete satisfaction on any lots purchased on order.

**Trucking/Delivery:**

Bulls will be delivered free of charge in South Dakota and bordering states. If you take your bulls home on sale day, you will receive \$100 off each bull purchased.

**Supplement Sheet:**

Updated EPDs will be available through American Angus Association. Scrotal sizes available sale day.

**Inspection of the Cattle:**

Bulls will be available for viewing prior to the sale at the Graesser Ranch. On sale day, the bulls will be at the Winner Livestock Auction.

**Lot Numbers:**

Lot numbers on the sale cattle correspond with the numbers in the catalog.

**Liabilities:**

All persons attending this sale do so at their own risk. The owners and agents assume no liability, legal or otherwise, for any accidents which may occur.

**Terms:**

Cattle will sell under the Standard Terms & Conditions as recommended by the American Angus Association.

**Food and Refreshments:**

A complimentary lunch will be provided, starting at 11:00 a.m. CT.

**Insurance:**

Martin-Trudeau Insurance will be available sale day.

**Guarantee:**

All bulls selling for \$3,000 or more are guaranteed against breeding injury for the first breeding season. Breeding season is defined as the 90-day period following the first turnout of bulls. If a replacement bull is available, he will be provided, or if the buyer prefers, credit toward one bull will be given in the following year's sale, less salvage value of the injured bull. Please notify us as soon as possible should injury occur and prior to the injured bull being sold for salvage.

**Bull Videos:**

Videos of the bulls will be online at [www.GraesserBros.com](http://www.GraesserBros.com)

**Videos and sale will be available  
on DVAuctions.com**

**DVAuction**  
Broadcasting Real-Time Auctions

**Sale Day, call Derek Graesser 605-830-0788**

**Derek Graesser**  
605-830-0788

**Rod Graesser**  
605-835-8039 or  
605-830-2029

**[www.GraesserBros.com](http://www.GraesserBros.com)**



Catalog produced by:

**RPI Promotions**  
Don Ravellette (605) 685-5147  
Beau Ravellette (605) 685-8155  
P.O. Box 788 • Philip, South Dakota 57567  
[www.rpipromotions.com](http://www.rpipromotions.com)

**Graesser Bros Annual Production Sale | 1**



# Reference Sires



## Brookdale Mogul

BD: 01/20/2019

Reg No: \*19550403

Tattoo: 249

CONNEALY CAPITALIST 028  
LD CAPITALIST 316  
LD DIXIE ERICA 2053  
JMB TRACTION 292  
BROOKDALE ZARA 597  
BROOKDALE ZARA 229

S A V FINAL ANSWER 0035  
PRIDES PITA OF CONANGA 8821  
C A FUTURE DIRECTION 5321  
LD DIXIE ERICA OAR 0853  
SITZ TOP GAME 561X  
JMB EMULOTA 013  
HARB PENDLETON 765 J H  
ALC O ZARA R29L

CED	BW	WW	YW	Milk	CW	Marb	RE	Fat	SW	SB
+7	+6	+72	+123	+29	+53	+43	+87	+032	+77	+140



## Baldrige Flagstone F411

BD: 05/09/2018

Reg No: +\*19478642

Tattoo: F411

MOGCK BULLSEYE  
HOOVER NO DOUBT  
MISS BLACKCAP ELLSTON J2  
STYLES UPGRADE J59  
BALDRIDGE ISABEL Y69  
BALDRIDGE ISABEL T935

MOGCK SURE SHOT  
MOGCK MARY 1255  
SYDGEN C C & 7  
MISS BLACKCAP ELLSTON D154  
SITZ UPWARD 307R  
PLAINVIEW LASSIE 71B  
BALDRIDGE KABOOM K243 KCF  
BALDRIDGE ISABEL P4527

CED	BW	WW	YW	Milk	CW	Marb	RE	Fat	SW	SB
-3	+3.5	+71	+131	+29	+58	+93	+62	+010	+63	+164



## GB Generation G12H

BD: 01/31/2020

Reg No: \*19919609

Tattoo: G12H

V A R GENERATION 2100  
DIAMOND GENERATION 41D2  
DIAMOND JANNET 701B  
KROUPALS B&B ATLAS 4061  
GB BLACKCAP A12E  
GB BLACKCAP 2712

CONNEALY CONSENSUS 7229  
SANDPOINT BLACKBIRD 8809  
21AR ROUNDUP 7005  
DIAMOND JANNET 7512  
R B ACTIVE DUTY 010  
B&B TESS 9045  
WAR UPWARD X215 T115  
ALC BLACKCAP N12T

CED	BW	WW	YW	Milk	CW	Marb	RE	Fat	SW	SB
+8	+1.5	+69	+125	+29	+52	+76	+69	+045	+70	+147



## U-2 Coalition 206C

BD: 01/23/2015

Reg No: \*18626847

Tattoo: 206C

CONNEALY CONSENSUS 7229  
HF SYNDICATE 213Z  
HF MISS BLACKCAP 27R  
YOUNG DALE XCLUSIVE 25X  
U2 ERELITE 109Z  
U-2 ERELITE 1X

CONNEALY CONSENSUS  
BLUE LILLY OF CONANGA 16  
TC FREEDOM 104  
HF MISS BLACKCAP 50N  
YOUNG DALE KNOCK OUT 134U  
YOUNG DALE POLLYANNA 60T  
S A V FINAL ANSWER 0035  
U-2 ERELITE 8109U

CED	BW	WW	YW	Milk	CW	Marb	RE	Fat	SW	SB
+10	+8	+57	+110	+28	+43	+37	+52	-.017	+56	+136

# Reference Sires

## Brookdale Con Plus 720



BD: 02/02/2020      Reg No: +\*19854701      Tattoo: 720

CONNEALY CONFIDENCE 0100  
CONNEALY CONFIDENCE PLUS

ELBANNA OF CONANGA 1209

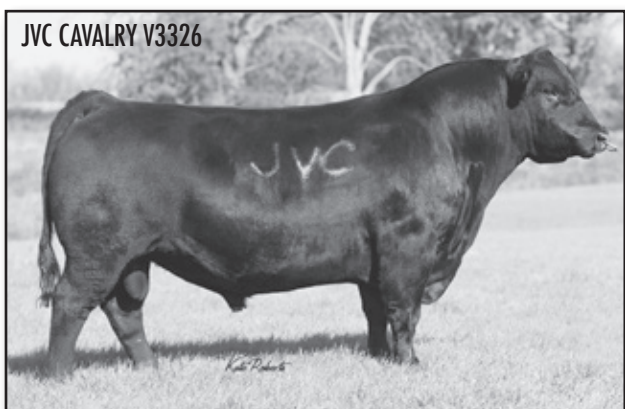
CONNEALY CONSENSUS 7229  
BROOKDALE FOREVER LADY 463

BROOKDALE FOREVER LADY 180

CONNEALY TOBIN  
BECKA GALA OF CONANGA 8281  
CONNEALY CONSENSUS  
ELBASTA OF CONANGA 9703  
CONNEALY CONSENSUS  
BLUE LILLY OF CONANGA 16  
S A V BISMARCK 5682  
ALC FOREVER LADY A23U

CED	BW	WW	YW	Milk	CW	Marb	RE	Fat	SW	SB
+7	+2.5	+74	+140	+38	+61	+83	+.80	+.026	+77	+166

JVC CAVALRY V3326



## Diamond Cavalry 02G3

BD: 01/30/2019      Reg No: 19499823      Tattoo: 02G3

JVC CAVALRY V3326  
DIAMOND CAVALRY 239C  
DIAMOND LUCY 988Z

MYTTY IN FOCUS  
DIAMOND ANNIE X571  
DIAMOND ANNIE 865R

CONNEALY CAVALRY 1149  
BRUSETT FOREVER W857  
H A R B ICON 019  
DIAMOND LUCY 21W6  
S A F FOCUS OF E R  
MYTTY COUNTESS 906  
VERMILION PAYWEIGHT J847  
DIAMOND ANNIE 414H

CED	BW	WW	YW	Milk	CW	Marb	RE	Fat	SW	SB
+5	+1.9	+75	+124	+23	+50	+07	+.58	-.005	+66	+107

## M R A Advocate 9035



BD: 01/09/2019      Reg No: \*19572776      Tattoo: 9035

CONNEALY JUDGMENT  
KG JUSTIFIED 3023  
KG MISS MAGIC 1443

CONNEALY ARSENAL 2174  
M R A BLACKBIRD 6362  
MRA BLACKBIRD 0072

CONNEALY CONSENSUS 7229  
ENTRINE OF CONANGA 9876  
SITZ WISDOM 481T  
KG MISS MAGIC 3528  
CONNEALY PACKER 547  
BLACK RICE OF CONANGA 9529  
S A V FINAL ANSWER 0035  
M R MISS RUSS 4260

CED	BW	WW	YW	Milk	CW	Marb	RE	Fat	SW	SB
+10	+.2	+68	+123	+35	+35	+.79	+.25	+.061	+76	+117





Ravellette

1

**GB Mogul M65K**

BD: 1/27/22

Reg No: 20497175

LD CAPITALIST 316  
BROOKDALE MOGUL  
BROOKDALE ZARA 597  
**ANGUS**  
R B TOUR OF DUTY 177  
GB EVERGREEN T65D  
GB EVERGREEN R65B

CONNELLY CAPITALIST 028  
LD DIXIE ERICA 2053  
JMB TRACTION 292  
BROOKDALE ZARA 229  
WERNER WAR PARTY 2417  
B A LADY 6807 305  
S A V RESOURCE 1441  
GB EVERGREEN R65

Birth Wt.  
83  
Adj. 205  
798  
Adj. 365  
1422

CED	BW	WW	YW	Milk	CW	Marb	RE	Fat	\$W	\$B
+11	+0.3	+81	+148	+29	+67	+0.29	+0.97	-0.024	+78	+149

• Another great Brookdale Mogul son to lead off this years sale as the Lot 1 bull. Without question this bull has excelled since birth. Big hiped, easy fleshing ability and top end structure, he adds frame and growth to the Capitalist 316 line. His pathfinder dam has raised top end quality every year. She has really grown into herself with another promising Raven Pleasant View bull calf on the ground.

• EPD ranking --- 1% Claw - 5% YW, CEM - 10% WW, RADG, CW, RE, \$W - 15% Angle, CED, \$F - 25% Doc, MW, \$M



BROOKDALE ZARA 597 - DAM OF BROOKDALE MOGUL

2

**GB Mogul M01K**

BD: 1/27/22

Reg No: 20539009

LD CAPITALIST 316  
BROOKDALE MOGUL  
BROOKDALE ZARA 597  
**ANGUS**  
BROOKDALE CUT UP 644  
GB BURGESS P02H  
MAR BURGESS OF 458N 1023

CONNELLY CAPITALIST 028  
LD DIXIE ERICA 2053  
JMB TRACTION 292  
BROOKDALE ZARA 229  
D R SIERRA CUT 7404  
BROOKDALE PROGRESS 371  
SITZ NEW DESIGN 458N  
RIVER HILLS BURGESS S553

Birth Wt.  
73  
Adj. 205  
707  
Adj. 365  
1278

CED	BW	WW	YW	Milk	CW	Marb	RE	Fat	\$W	\$B
+2	+2.2	+76	+134	+27	+74	+0.39	+1.07	+0.006	+71	+165

• We have a very consistent set of Mogul sons this year. A great opportunity to put together a group of half brothers. Great start for M01K's dam.

• EPD ranking --- 5% CW, RE, \$F - 15% WW, YW, \$W - 20% Claw, \$B, \$C



BROOKDALE MOGUL - SIRE OF LOT 1





**3** **GB Mogul M18K** Reg No: 20539013  
BD: 2/2/22

LD CAPITALIST 316 BROOKDALE MOGUL BROOKDALE ZARA 597 <b>ANGUS</b> BROOKDALE CASH 665 GB TREASURE H18F GB TREASURE C15A	CONNEALY CAPITALIST 028 LD DIXIE ERICA 2053 JMB TRACTION 292 BROOKDALE ZARA 229 BARSTOW CASH BROOKDALE LADY BURGESS 1020 CONNEALY CONSENSUS 7229 ALC TREASURE C50P	Birth Wt. <b>85</b> Adj. 205 <b>797</b> Adj. 365 <b>1365</b>
------------------------------------------------------------------------------------------------------------------------------------------	-----------------------------------------------------------------------------------------------------------------------------------------------------------------------------------------	-----------------------------------------------------------------------------

CED	BW	WW	YW	Milk	CW	Marb	RE	Fat	\$W	\$B
+12	-0.6	+67	+125	+35	+51	+0.73	+0.55	+0.047	+75	+137

- Mogul sons are stout and correct. Great representation of that in M18K. This bull will be easy to find sale day.
- EPD ranking --- 10% CED, Milk, \$W - 15% Milk - 25% Claw
- Dam is a beautiful Cash 665 daughter by the popular Treasure cow family. Bright days ahead for H18F.

**4** **GB Mogul M22K** Reg No: 20539015  
BD: 1/26/22

LD CAPITALIST 316 BROOKDALE MOGUL BROOKDALE ZARA 597 <b>ANGUS</b> H A R B WINDY 702 JH LBK MS QUEEDY OK22 LBK MS QUEEDY 6K73	CONNEALY CAPITALIST 028 LD DIXIE ERICA 2053 JMB TRACTION 292 BROOKDALE ZARA 229 A A R REALLY WINDY 1205 H A R B BLACK LADY 073 J H LEMMON NEWSLINE C804 LBK MISS QUEEDY 108	Birth Wt. <b>84</b> Adj. 205 <b>686</b> Adj. 365 <b>1211</b>
------------------------------------------------------------------------------------------------------------------------------------------------	--------------------------------------------------------------------------------------------------------------------------------------------------------------------------------------------------	-----------------------------------------------------------------------------

CED	BW	WW	YW	Milk	CW	Marb	RE	Fat	\$W	\$B
+12	+0.1	+54	+97	+40	+42	+0.45	+0.58	+0.004	+67	+122

- Last calf out of a consistent 13 year old Windy 702 daughter. This will be the 9th bull sold from OK22. Top 30% claw and angle and longevity to boot. I would look to keep many daughters from this herd sire.
- EPD ranking - 1% Milk - 10% CED - 25% Doc, BW, HS \$W - 30% Claw, Angle

**5** **GB Mogul M29K** Reg No: 20539017  
BD: 2/6/22

LD CAPITALIST 316 BROOKDALE MOGUL BROOKDALE ZARA 597 <b>ANGUS</b> VAR ROCKY 80029 KR QUEEN 4028 BARSTOW QUEEN W16	CONNEALY CAPITALIST 028 LD DIXIE ERICA 2053 JMB TRACTION 292 BROOKDALE ZARA 229 HARB ONWARD 786 J H VERMILION LASS 0029 S A V FINAL ANSWER 0035 RCA QUEEN R42	Birth Wt. <b>87</b> Adj. 205 <b>685</b> Adj. 365 <b>1186</b>
-------------------------------------------------------------------------------------------------------------------------------------	------------------------------------------------------------------------------------------------------------------------------------------------------------------------------------	-----------------------------------------------------------------------------

CED	BW	WW	YW	Milk	CW	Marb	RE	Fat	\$W	\$B
+10	-1.0	+52	+93	+33	+41	+0.34	+0.75	+0.035	+62	+121

- EPD ranking - 10% Angle, BW - 20% CED, Milk, PAP, \$M





**6** **GB Mogul M48K** Reg No: 20539019  
 BD: 2/5/22

LD CAPITALIST 316  
 BROOKDALE MOGUL  
 BROOKDALE ZARA 597  
**ANGUS**  
 KROUPALS B&B NIKON 7020  
 GB GOLD LADY N48G  
 GB GOLD LADY T48D

CONNEALY CAPITALIST 028  
 LD DIXIE ERICA 2053  
 JMB TRACTION 292  
 BROOKDALE ZARA 229  
 KROUPALS B&B NIKON 5035  
 B&B BLKBD PROGRESS 4089  
 R B TOUR OF DUTY 177  
 GB GOLD LADY L48B

Birth Wt.  
**80**  
 Adj. 205  
**676**  
 Adj. 365  
**1242**

CED	BW	WW	YW	Milk	CW	Marb	RE	Fat	SW	SB
+3	+1.8	+74	+126	+31	+51	+0.26	+0.67	-0.011	+74	+121

- Deep bodied Mogul son. These bulls are smooth moving and have the look phenotypically.
- EPD ranking - 15% Claw, \$W - 20% WW, Milk

**7** **GB Mogul M71K** Reg No: 20539022  
 BD: 1/28/22

LD CAPITALIST 316  
 BROOKDALE MOGUL  
 BROOKDALE ZARA 597  
**ANGUS**  
 WAR UPWARD X215 T115  
 GB BLACKCAP W71B  
 GB BLACKCAP B71W

CONNEALY CAPITALIST 028  
 LD DIXIE ERICA 2053  
 JMB TRACTION 292  
 BROOKDALE ZARA 229  
 SITZ UPWARD 307R  
 WAR RITO T115 416 4257  
 ALC TANGO B18T  
 ALC BLACKCAP 171S

Birth Wt.  
**80**  
 Adj. 205  
**732**  
 Adj. 365  
**1350**

CED	BW	WW	YW	Milk	CW	Marb	RE	Fat	SW	SB
+10	-0.6	+60	+108	+24	+49	+0.52	+0.95	-0.006	+59	+145

- Powerhouse Mogul son out of a top end bull producing cow line. I believe Mogul was a great mating to this Blackcap cow. Big hiped and added length
- EPD ranking - 10% RE - 15% Claw, Angle, BW - 20% CED, SC





**8****GB Mogul M82K**

BD: 2/16/22

Reg No: 20539023

LD CAPITALIST 316  
BROOKDALE MOGUL  
BROOKDALE ZARA 597

BROOKDALE CASH 665  
GB PRIDE P82E  
GB PRIDE R82B

CONNELLY CAPITALIST 028  
LD DIXIE ERICA 2053  
JMB TRACTION 292  
BROOKDALE ZARA 229  
BARSTOW CASH  
BROOKDALE LADY BURGESS 1020  
S A V RESOURCE 1441  
SOO LINE PRIDE 1082

Birth Wt.  
**90**  
Adj. 205  
**679**  
Adj. 365  
**1329**

CED	BW	WW	YW	Milk	CW	Marb	RE	Fat	\$W	\$B
+5	+1.4	+67	+119	+30	+56	+0.27	+0.81	+0.030	+64	+138

- Deep bodied bull with extra bone. He excelled after weaning and has grown into a top end Mogul son. ADG-4.06
- EPD ranking - 10% - Claw - 20% Doc, \$F - 25% Milk, RE

**9****GB Mogul M95K**

BD: 2/4/22

Reg No: 20539024

LD CAPITALIST 316  
BROOKDALE MOGUL  
BROOKDALE ZARA 597

**ANGUS**  
MOGCK BULLSEYE  
GB MISS HORIZON B94B  
LAGRAND MISS PENDLETON 9394

CONNELLY CAPITALIST 028  
LD DIXIE ERICA 2053  
JMB TRACTION 292  
BROOKDALE ZARA 229  
MOGCK SURE SHOT  
MOGCK MARY 1255  
HARB PENDLETON 765 J H  
LAGRAND MISS HORIZON 7527

Birth Wt.  
**87**  
Adj. 205  
**715**  
Adj. 365  
**1179**

CED	BW	WW	YW	Milk	CW	Marb	RE	Fat	\$W	\$B
+9	+1.6	+70	+115	+25	+59	+0.49	+0.89	+0.000	+71	+145

- EPD ranking - 10% Doc, Angle, HS, \$M - 15% RE, \$W - 25% Claw, WW, CW, \$C

**Angus Bulls****10****GB Mogul X70K**

BD: 3/7/22

Reg No: 20539050

LD CAPITALIST 316  
BROOKDALE MOGUL  
BROOKDALE ZARA 597

**ANGUS**  
BROOKDALE CUT UP 644  
GB BLACKCAP M70F  
GB BLACKCAP C71C

CONNELLY CAPITALIST 028  
LD DIXIE ERICA 2053  
JMB TRACTION 292  
BROOKDALE ZARA 229  
D R SIERRA CUT 7404  
BROOKDALE PROGRESS 371  
S A V WIND CHILL 3442  
GB BLACKCAP B71W

Birth Wt.  
**84**  
Adj. 205  
**743**  
Adj. 365  
**1279**

CED	BW	WW	YW	Milk	CW	Marb	RE	Fat	\$W	\$B
+4	+1.9	+73	+123	+34	+59	+0.27	+0.91	-0.010	+78	+131

- Another good mating to the Blackcap line. I really like how this bull has come along.
- EPD ranking - 10% Milk, \$W - 20% WW, RE

**11****GB Mogul X06K**

BD: 1/31/22

Reg No: 20539031

LD CAPITALIST 316  
BROOKDALE MOGUL  
BROOKDALE ZARA 597

**ANGUS**  
BARSTOW CASH  
GB RACHEL H04G  
ALC RACHEL N04T

CONNELLY CAPITALIST 028  
LD DIXIE ERICA 2053  
JMB TRACTION 292  
BROOKDALE ZARA 229  
SITZ DASH 10277  
BARSTOW QUEEN W16  
B/R NEW FRONTIER 095  
ALC RACHEL G07J

Birth Wt.  
**79**  
Adj. 205  
**676**  
Adj. 365  
**1310**

CED	BW	WW	YW	Milk	CW	Marb	RE	Fat	\$W	\$B
+2	+2.1	+81	+141	+25	+61	+0.50	+0.62	-0.001	+68	+147

- This bull would add more lbs to you steer calves. You will notice these Cash x N04T daughters throughout the catalog raising bulls with more bone and added frame.
- EPD ranking - 10% - WW, YW, RADG, MW - 20% HP, CW, \$F - 25% Angle, SC, \$W



**12**

**GB Mogul M04K**

BD: 2/2/22

Reg No: 20539010

LD CAPITALIST 316  
 BROOKDALE MOGUL  
 BROOKDALE ZARA 597  
**ANGUS**  
 S A V WIND CHILL 3442  
 GB RACHEL C04C  
 GB RACHEL F04X

CONNEALY CAPITALIST 028  
 LD DIXIE ERICA 2053  
 JMB TRACTION 292  
 BROOKDALE ZARA 229  
 APEX WINDY 078  
 S A V BLACKCAP MAY 4136  
 S A V FINAL ANSWER 0035  
 ALC RACHEL N04T

Birth Wt.  
**75**  
 Adj. 205  
**622**  
 Adj. 365  
**1108**

CED	BW	WW	YW	Milk	CW	Marb	RE	Fat	\$W	\$B
+11	-1.2	+55	+93	+30	+33	+0.24	+0.43	+0.049	+68	+100

• EPD ranking - 10% Doc, BW, \$M, \$EN - 15% CED, DMI, PAP - 25% CEM, Milk, \$W



*Ravellette*

**13**

**GB Flagstone F12K**

BD: 2/5/22

Reg No: 20566904

HOOVER NO DOUBT  
 BALDRIDGE FLAGSTONE F411  
 BALDRIDGE ISABEL Y69  
**ANGUS**  
 CONNEALY FINAL PRODUCT  
 DICKAUS FP LO 474  
 DICKAUS LO 881

MOGCK BULLSEYE  
 MISS BLACKCAP ELLSTON J2  
 STYLES UPGRADE J59  
 BALDRIDGE ISABEL T935  
 CONNEALY PRODUCT 568  
 EBONISTA OF CONANGA 471  
 CONNEALY LEAD ON  
 DICKAUS LO 473

Birth Wt.  
**80**  
 Adj. 205  
**734**  
 Adj. 365  
**1352**

CED	BW	WW	YW	Milk	CW	Marb	RE	Fat	\$W	\$B
+2	+0.9	+63	+112	+34	+38	+0.99	+0.70	-0.027	+71	+148

• I haven't seen many Flagstone sons better than this bull. We chose Flagstone for his Docility, correctness, and overall eye appeal.

• EPD ranking - 10% Milk, CEM, \$G - 15% Marb, \$M, \$W - 25% \$C

**14**

**GB Flagstone F06K**

BD: 2/9/22

Reg No: 20538999

HOOVER NO DOUBT  
 BALDRIDGE FLAGSTONE F411  
 BALDRIDGE ISABEL Y69  
**ANGUS**  
 S TITLIST 1145  
 GB PLEASANT PRIDE T06E  
 GB PLEASANT PRIDE U06C

MOGCK BULLSEYE  
 MISS BLACKCAP ELLSTON J2  
 STYLES UPGRADE J59  
 BALDRIDGE ISABEL T935  
 RA LINCOLN W144  
 S CORA 572  
 BRUIN UPROAR 0070  
 GB PLEASANT PRIDE 2706

Birth Wt.  
**85**  
 Adj. 205  
**674**  
 Adj. 365  
**1300**

CED	BW	WW	YW	Milk	CW	Marb	RE	Fat	\$W	\$B
+8	-0.7	+70	+129	+32	+50	+0.89	+0.57	+0.045	+77	+148

• Extremely docile bull. Good footed, sound structure. His coming 7 year old dam has been very consistent raising 4 top end bulls. Titlist daughters have worked well in our herd.

• EPD ranking - 1% Doc, Angle, \$M - 10% Claw, \$W - 15% BW, Milk, HS, \$C - 25% WW, YW, Marb, \$G

• Top notch hfr bull. Look to be able to keep females back out of F06K.



## 15 GB Flagstone F10K

BD: 2/3/22 Reg No: 20539000

HOOVER NO DOUBT  
BALDRIDGE FLAGSTONE F411  
BALDRIDGE ISABEL Y69  
**ANGUS**  
CONNEALY CONSENSUS 7229  
SUA CONSENSUS SUNSET 410  
SUA EXPECTATION SUNSET U8402

MOGCK BULLSEYE  
MISS BLACKCAP ELLSTON J2  
STYLES UPGRADE J59  
BALDRIDGE ISABEL T935  
CONNEALY CONSENSUS  
BLUE LILLY OF CONANGA 16  
G A R EXPECTATION 6901  
S U A 616 SUNSET 9110

Birth Wt.  
**70**  
Adj. 205  
**622**  
Adj. 365  
**1104**

CED	BW	WW	YW	Milk	CW	Marb	RE	Fat	\$W	\$B
+13	-2.0	+51	+96	+33	+35	+0.96	+0.51	+0.032	+65	+141

- Sure shot heifer bull.
- EPD ranking - 5% BW - 10% CED, \$M - 20% Milk, HS, Marb, \$G

## 16 GB Flagstone F14K

BD: 2/13/22 Reg No: 20539001

HOOVER NO DOUBT  
BALDRIDGE FLAGSTONE F411  
BALDRIDGE ISABEL Y69  
**ANGUS**  
R B TOUR OF DUTY 177  
GB BEAUTY T14D  
GB BEAUTY R14B

MOGCK BULLSEYE  
MISS BLACKCAP ELLSTON J2  
STYLES UPGRADE J59  
BALDRIDGE ISABEL T935  
WERNER WAR PARTY 2417  
B A LADY 6807 305  
VISION ROYAL FLUSH 1422  
GB Y ME T14Y

Birth Wt.  
**85**  
Adj. 205  
**630**  
Adj. 365  
**1155**

CED	BW	WW	YW	Milk	CW	Marb	RE	Fat	\$W	\$B
+4	+1.7	+56	+100	+40	+31	+0.75	+0.38	+0.000	+67	+115

- Expect his daughters to be good footed, fertile, highly productive females that are made to last a long time.
- EPD ranking - 1% Claw, Angle, Milk, \$M - 10% SC - 15% HS, HP

## 17 GB Flagstone F24K

BD: 1/19/22 Reg No: 20539002

HOOVER NO DOUBT  
BALDRIDGE FLAGSTONE F411  
BALDRIDGE ISABEL Y69  
**ANGUS**  
SOO LINE MOTIVE 9016  
GB BLACKBIRD M24E  
GB BLACKBIRD 2524

MOGCK BULLSEYE  
MISS BLACKCAP ELLSTON J2  
STYLES UPGRADE J59  
BALDRIDGE ISABEL T935  
HF KODIAK 5R  
TLA BEAUTY 5R  
S A V FINAL ANSWER 0035  
ALC BLACKBIRD B24R

Birth Wt.  
**84**  
Adj. 205  
**712**  
Adj. 365  
**1253**

CED	BW	WW	YW	Milk	CW	Marb	RE	Fat	\$W	\$B
+5	+0.8	+63	+110	+35	+45	+0.65	+0.48	+0.036	+69	+137

- EPD ranking - 1% Angle - 5% Doc - 20% Claw, DMI, CEM, Milk, \$W

## 18 GB Flagstone F32K

BD: 2/10/22 Reg No: 20539003

HOOVER NO DOUBT  
BALDRIDGE FLAGSTONE F411  
BALDRIDGE ISABEL Y69  
**ANGUS**  
CROOK MT WINDY 17  
GB LUCY Y32D  
V D A R LUCY 0323

MOGCK BULLSEYE  
MISS BLACKCAP ELLSTON J2  
STYLES UPGRADE J59  
BALDRIDGE ISABEL T935  
CROOK MT REALLY WINDY 104  
REVOLUTION 231 OF CROOK MT  
COLE CREEK BLACK CEDAR 46P  
V D A R LUCY 7614

Birth Wt.  
**82**  
Adj. 205  
**651**  
Adj. 365  
**1112**

CED	BW	WW	YW	Milk	CW	Marb	RE	Fat	\$W	\$B
+5	+0.8	+58	+101	+36	+39	+0.89	+0.26	+0.044	+70	+127

- EPD ranking - 1% doc - 5% Claw, Angle, Milk, \$M - 10% SC - 20% Marb, \$W, \$EN

## 19 GB Flagstone F56K

BD: 1/29/22 Reg No: 20539004

HOOVER NO DOUBT  
BALDRIDGE FLAGSTONE F411  
BALDRIDGE ISABEL Y69  
**ANGUS**  
BRUIN UPROAR 0070  
GB BEAUTY U56D  
GB BEAUTY 2056

MOGCK BULLSEYE  
MISS BLACKCAP ELLSTON J2  
STYLES UPGRADE J59  
BALDRIDGE ISABEL T935  
SITZ UPWARD 307R  
FALCON BLACKBIRD 6071  
H A R B DENALI 788 J H  
METZGER BEAUTY 550

Birth Wt.  
**89**  
Adj. 205  
**657**  
Adj. 365  
**1198**

CED	BW	WW	YW	Milk	CW	Marb	RE	Fat	\$W	\$B
+2	+2.5	+70	+127	+24	+51	+0.87	+0.37	+0.025	+66	+150

- Ranks in the top 35% of the breed for every \$ category calculated by the Angus Association.
- EPD ranking - 1% Doc, Angle, HS, \$M - 5% Claw - 15% \$C - 25% WW, YW, Marb, \$W, \$EN



## 20 GB Flagstone F63K

BD: 2/2/22 Reg No: 20539005

HOOVER NO DOUBT  
BALDRIDGE FLAGSTONE F411  
BALDRIDGE ISABEL Y69  
**ANGUS**  
S TITLES 1145  
GB CHLOE T64E  
RC CHLOE 1764

MOGCK BULLSEYE  
MISS BLACKCAP ELLSTON J2  
STYLES UPGRADE J59  
BALDRIDGE ISABEL T935  
RA LINCOLN W144  
S CORA 572  
DL INCENTIVE 228  
BASIN CHLOE U518

Birth Wt.  
**82**  
Adj. 205  
**720**  
Adj. 365  
**1283**

CED	BW	WW	YW	Milk	CW	Marb	RE	Fat	\$W	\$B
+7	+1.0	+62	+112	+36	+45	+0.60	+0.38	+0.022	+71	+130

- This smooth made Flagstone son has lots of eye appeal. Flagstone sons have been very popular with 80 head averaging \$7000 at GMAR and 12 head averaging \$13,035 at Vermillion Ranch.
- EPD ranking - 5% Angle, Milk - 15% Doc, DMI, \$M, \$W



**21**

**GB Flagstone F65K**

BD: 2/2/22

Reg No: 20539006

HOOVER NO DOUBT  
BALDRIDGE FLAGSTONE F411  
BALDRIDGE ISABEL Y69  
**ANGUS**  
SOO LINE MOTIVE 9016  
GB EVERGREEN M65C  
GB EVERGREEN F65X

MOGCK BULLSEYE  
MISS BLACKCAP ELLSTON J2  
STYLES UPGRADE J59  
BALDRIDGE ISABEL T935  
HF KODIAK 5R  
TLA BEAUTY 5R  
S A V FINAL ANSWER 0035  
GB EVERGREEN R65

Birth Wt.  
**92**  
Adj. 205  
**678**  
Adj. 365  
**1144**

CED	BW	WW	YW	Milk	CW	Marb	RE	Fat	\$W	\$B
+3	+1.5	+61	+103	+40	+43	+0.66	+0.50	+0.013	+75	+128

• EPD ranking - 2% Angle, Milk, \$M - 5% Claw - 15% Doc, HP, HS, \$W



BALDRIDGE ISABEL Y69 - GRANDAM OF LOT 21



**22**

**GB Flagstone F74K**

BD: 2/15/22

Reg No: 20539007

HOOVER NO DOUBT  
BALDRIDGE FLAGSTONE F411  
BALDRIDGE ISABEL Y69  
**ANGUS**  
SOO LINE MOTIVE 9016  
GB PRIDE M74A  
SOO LINE PRIDE 1174

MOGCK BULLSEYE  
MISS BLACKCAP ELLSTON J2  
STYLES UPGRADE J59  
BALDRIDGE ISABEL T935  
HF KODIAK 5R  
TLA BEAUTY 5R  
S A V IRON MAN 8195  
DWAJO PRIDE 44P

Birth Wt.  
**89**  
Adj. 205  
**661**  
Adj. 365  
**1255**

CED	BW	WW	YW	Milk	CW	Marb	RE	Fat	\$W	\$B
+1	+1.9	+56	+108	+29	+47	+0.65	+0.60	+0.015	+52	+148

• Very balanced bull both phenotypically and throughout his EPD profile. Motive daughters have outstanding udders. Big hipped cow and wide through her pins.  
• EPD ranking - 10% HP - 20% Angle



**23**

**GB Generation M07K**

BD: 1/20/22

Reg No: 20539011

DIAMOND GENERATION 41D2  
GB GENERATION G12H  
GB BLACKCAP A12E  
**ANGUS**  
S A V SENSATION 5615  
COLEMAN QUEEN 8107  
FLAG QUEEN W 00649

V A R GENERATION 2100  
DIAMOND JANNET 701B  
KROUPALS B&B ATLAS 4061  
GB BLACKCAP 2712  
S A V REGISTRY 2831  
S A V BLACKCAP MAY 4136  
S A V 004 DENSITY 4336  
PLATTEMERE QUEEN W 660

Birth Wt.  
**89**  
Adj. 205  
**789**  
Adj. 365  
**1410**

CED	BW	WW	YW	Milk	CW	Marb	RE	Fat	\$W	\$B
+7	+1.9	+69	+124	+24	+44	+0.64	+0.54	+0.034	+60	+127

• A herd sire prospect here. Soft made, easy fleshing, and deep bodied. GB Generation G12H sired a very consistent set of bull calves.  
• EPD ranking - 10% Doc - 20% Angle - 25% YW





**24 GB Generation M49K**  
 BD: 1/23/22 Reg No: 20539020

DIAMOND GENERATION 41D2  
 GB GENERATION G12H  
 GB BLACKCAP A12E  
 ANGUS KOUPAL'S B&B METALLIC 6018  
 GB RUTH M49F  
 GMAR DEMPSEY B347

V A R GENERATION 2100  
 DIAMOND JANNET 701B  
 KOUPLS B&B ATLAS 4061  
 GB BLACKCAP 2712  
 CONNEALY FULL METAL  
 B&B BLACKCAP 0068  
 FF DEMPSEY Y11  
 GMAR NEW DESIGN W232

Birth Wt. **90**  
 Adj. 205 **728**  
 Adj. 365 **1301**

CED	BW	WW	YW	Milk	CW	Marb	RE	Fat	\$W	\$B
+6	+1.2	+63	+120	+31	+50	+0.79	+0.58	+0.028	+63	+152

- Extremely complete bull that ranks in the top 30% of the breed for \$W, \$F, \$G, \$B, \$C.
- Many of these Metallic daughters are becoming influential females in our herd.
- EPD ranking - 15% angle - 25% RADG, Milk, PAP

**25 GB Generation C18K**  
 BD: 2/1/22 Reg No: 20538991

DIAMOND GENERATION 41D2  
 GB GENERATION G12H  
 GB BLACKCAP A12E  
 ANGUS KOUPLS B&B ACTIVE DUTY 6117  
 GB QUEEN PEGGY K18F  
 GB QUEEN PEGGY U15B

V A R GENERATION 2100  
 DIAMOND JANNET 701B  
 KOUPLS B&B ATLAS 4061  
 GB BLACKCAP 2712  
 R B ACTIVE DUTY 010  
 B&B TESS 9045  
 SITZ UPWARD 307R  
 ALC QUEEN PEGGY N15T

Birth Wt. **81**  
 Adj. 205 **658**  
 Adj. 365 **1160**

CED	BW	WW	YW	Milk	CW	Marb	RE	Fat	\$W	\$B
+10	+0.8	+55	+99	+30	+39	+0.55	+0.45	+0.025	+58	+129

- Heifer bull prospect out of a moderate framed cow.
- EPD ranking - 20% CED, CEM, Milk

**26 GB Generation X07K**  
 BD: 1/28/22 Reg No: 20539032

DIAMOND GENERATION 41D2  
 GB GENERATION G12H  
 GB BLACKCAP A12E  
 ANGUS KOUPAL'S B&B METALLIC 6018  
 GB PLEASANT PRIDE M06G  
 GB PLEASANT PRIDE 2706

V A R GENERATION 2100  
 DIAMOND JANNET 701B  
 KOUPLS B&B ATLAS 4061  
 GB BLACKCAP 2712  
 CONNEALY FULL METAL  
 B&B BLACKCAP 0068  
 S A V FINAL ANSWER 0035  
 ALC PLEASANT PRIDE 106T

Birth Wt. **80**  
 Adj. 205 **788**  
 Adj. 365 **1228**

CED	BW	WW	YW	Milk	CW	Marb	RE	Fat	\$W	\$B
+9	+1.5	+102	+174	+22	+79	+0.62	+0.57	+0.042	+88	+162

- Large spread from BW to YW. X07K was a standout all summer long. Looking for a docile bull he is it. M06G is another Metallic daughter standout with a NR of 2 @ 115.
- EPD ranking - 1% WW, YW, \$W - 3% MW, CW - 15% HP, RADG, HS, \$F, \$C - 25% Doc, CED, \$B





# 27 GB Generation X27K

BD: 1/28/22

Reg No: 20539038

DIAMOND GENERATION 41D2  
 GB GENERATION G12H  
 GB BLACKCAP A12E  
**ANGUS**  
 K C F BENNETT DIVERSE  
 GB MISSIE D28G  
 MAR EXT OF 2417 4028

V A R GENERATION 2100  
 DIAMOND JANNET 701B  
 KOUPALS B&B ATLAS 4061  
 GB BLACKCAP 2712  
 FINTRY OF GRAHAM 48708  
 K C F MISS WHITMAN W631  
 WERNER WAR PARTY 2417  
 BRUSETT EXT Y105

Birth Wt.  
**83**  
 Adj. 205  
**675**  
 Adj. 365  
**1190**

CED	BW	WW	YW	Milk	CW	Marb	RE	Fat	SW	SB
+11	-0.3	+70	+113	+30	+34	+0.93	+0.65	+0.046	+80	+126

- Moderate framed heifer bull with a little extra shape.
- EPD ranking - 2% HP, \$M - 5% \$W - 10% Doc, HS - 20% CED, BW, SC, Marb, \$G - 25% WW, Milk, \$EN



# 28 GB Generation X29K

BD: 2/5/22

Reg No: 20539040

DIAMOND GENERATION 41D2  
 GB GENERATION G12H  
 GB BLACKCAP A12E  
**ANGUS**  
 KOUPALS B&B COMMANDER 7068  
 GB PLEASANT PRIDE V28G  
 GB PLEASANT PRIDE T28E

V A R GENERATION 2100  
 DIAMOND JANNET 701B  
 KOUPALS B&B ATLAS 4061  
 GB BLACKCAP 2712  
 VINTAGE COMMANDER 4152  
 B&B ERICA 605  
 S TITLEST 1145  
 GB PLEASANT PRIDE V28C

Birth Wt.  
**87**  
 Adj. 205  
**726**  
 Adj. 365  
**1270**

CED	BW	WW	YW	Milk	CW	Marb	RE	Fat	SW	SB
+9	+2.1	+78	+129	+35	+57	+0.49	+0.64	+0.020	+86	+132

- X29K has really come along nicely. He reminds me a lot of GB Generation G12H himself. The Pleasant Pride cow family has been a staple in our cow herd. This mix of the Blackcap/Pleasant Pride cow families was a success. V28G has a great start with a NR 2@107.
- EPD ranking - 5% \$M, \$W - 10% WW, Milk - 20% YW, HP





**29**

**GB Coalition C81K**

BD: 2/8/22

Reg No: 20538998

HF SYNDICATE 213Z  
U-2 COALITION 206C  
U2 ERELITE 109Z  
**ANGUS**  
S A V WIND CHILL 3442  
GB RACHEL C81C  
GB RACHEL 2080

CONNEALY CONSENSUS 7229  
HF MISS BLACKCAP 27R  
YOUNG DALE XCLUSIVE 25X  
U-2 ERELITE 1X  
APEX WINDY 078  
S A V BLACKCAP MAY 4136  
CONNEALY IMPRESSION  
GB RACHEL S80X

Birth Wt. **99**  
Adj. 205 **682**  
Adj. 365 **1271**

CED	BW	WW	YW	Milk	CW	Marb	RE	Fat	\$W	\$B
+4	+3.4	+68	+118	+31	+42	+0.55	+0.30	+0.004	+65	+123

• EPD ranking - 10% Doc, \$M - 15% Claw, Angle - 20% Milk, HP



**30**

**GB Coalition C52K**

BD: 2/2/22

Reg No: 20538996

HF SYNDICATE 213Z  
U-2 COALITION 206C  
U2 ERELITE 109Z  
**ANGUS**  
V D A R CEDAR WIND 8111  
GB HYALITE Y52C  
V D A R PF HYALITE 9752

CONNEALY CONSENSUS 7229  
HF MISS BLACKCAP 27R  
YOUNG DALE XCLUSIVE 25X  
U-2 ERELITE 1X  
COLE CREEK CEDAR RIDGE 1V  
V D A R CHLOE 9727  
V D A R VALUE 1046  
V D A R PF HYALITE 7555

Birth Wt. **91**  
Adj. 205 **736**  
Adj. 365 **1328**

CED	BW	WW	YW	Milk	CW	Marb	RE	Fat	\$W	\$B
+5	+2.5	+75	+132	+34	+64	-0.04	+0.63	-0.002	+76	+136

• Coalition sired our high selling bull last year that displayed the same multi trait superiority as this bull.

• EPD ranking - 5% Doc, \$M, \$F - 10% Claw, Angle, RADG, Milk, \$W - 15% WW, YW, CW - 25% HP



**31**

**GB Coalition C28K**

BD: 2/10/22

Reg No: 20538994

HF SYNDICATE 213Z  
U-2 COALITION 206C  
U2 ERELITE 109Z  
**ANGUS**  
V D A R REALLY WINDY 1523  
GB PLEASANT PRIDE V28C  
GB PLEASANT PRIDE W25A

CONNEALY CONSENSUS 7229  
HF MISS BLACKCAP 27R  
YOUNG DALE XCLUSIVE 25X  
U-2 ERELITE 1X  
V D A R REALLY WINDY 4097  
V D A R LASS 8808  
WAR UPWARD X215 T115  
ALC PLEASANT PRIDE Y255

Birth Wt. **98**  
Adj. 205 **734**  
Adj. 365 **1280**

CED	BW	WW	YW	Milk	CW	Marb	RE	Fat	\$W	\$B
+3	+2.8	+57	+110	+34	+44	+0.63	+0.49	+0.020	+57	+135

• The Pleasant Pride cow family is known for docility. C28K's dam is a definite show of docility. Boasts a NR 5@112!

• EPD ranking - 3% Doc - 10% Milk - 25% Claw, PAP, HS, \$M

**32**

**GB Coalition C26K**

BD: 1/30/22

Reg No: 20538993

HF SYNDICATE 213Z  
U-2 COALITION 206C  
U2 ERELITE 109Z  
**ANGUS**  
BROOKDALE CUT UP 644  
GB HARRIET P26D  
GB HARRIET W26A

CONNEALY CONSENSUS 7229  
HF MISS BLACKCAP 27R  
YOUNG DALE XCLUSIVE 25X  
U-2 ERELITE 1X  
D R SIERRA CUT 7404  
BROOKDALE PROGRESS 371  
WAR UPWARD X215 T115  
GB HARRIET S26X

Birth Wt. **70**  
Adj. 205 **661**  
Adj. 365 **1259**

CED	BW	WW	YW	Milk	CW	Marb	RE	Fat	\$W	\$B
+4	+2.1	+82	+143	+38	+68	+0.50	+0.47	-0.005	+85	+149

• EPD ranking - 4% Doc, Milk, \$M, \$W - 10% WW, YW, HP, Claw, \$W - 15% Angle, \$F, \$C







**33 GB Resource R37K**  
 BD: 2/9/22 Reg No: 20539027

RITO 707 OF IDEAL 3407 7075  
 S A V RESOURCE 1441  
 S A V BLACKCAP MAY 4136  
**ANGUS** LT WESTPORT 1076  
 MAR RUBY OF 1076 5037  
 MAR LUKEN GOOD OF 603 9108

R R RITO 707  
 IDEAL 3407 OF 1418 076  
 S A V 8180 TRAVELER 004  
 S A V MAY 2397  
 LT BRISTOL 9011  
 LT PRAIRIE SCOTCH 7094  
 PAPA PRIME TIME 603  
 MISS JT LADY OF FOCUS 771

Birth Wt. 92  
 Adj. 205 745  
 Adj. 365 1319

CED	BW	WW	YW	Milk	CW	Marb	RE	Fat	\$W	\$B
+3	+2.4	+69	+131	+26	+52	+0.03	+1.13	-0.004	+60	+121

• Had to try this mating on the cow and it worked very well. 5037 has a great udder and mothering instincts. NR 6 @106  
 • EPD ranking - 5% RE - 10% HP - 15% Claw, Angle, PAP, SC - 20% YW, \$M

**34 GB Acclaim A65K**  
 BD: 1/19/22 Reg No: 20561034

JINDRA 3RD DIMENSION  
 JINDRA ACCLAIM  
 JINDRA BLACKBIRD LASSY 1111  
**ANGUS** S A V WIND CHILL 3442  
 GB EVERGREEN C65E  
 GB EVERGREEN F65X

JINDRA DOUBLE VISION  
 JINDRAS SAPPHIRE J 417  
 CONNEALY IMPRESSION  
 JINDRAS ENCHANTRESS J 102  
 APEX WINDY 078  
 S A V BLACKCAP MAY 4136  
 S A V FINAL ANSWER 0035  
 GB EVERGREEN R65

Birth Wt. 82  
 Adj. 205 682  
 Adj. 365 1213

CED	BW	WW	YW	Milk	CW	Marb	RE	Fat	\$W	\$B
+4	+1.2	+65	+116	+34	+51	+0.54	+0.52	+0.002	+68	+141

• This Acclaim son adds frame to this very maternal Windchill daughter.  
 • EPD ranking - 2% HP - 10% Milk



**35 GB Bomber B35K**  
 BD: 2/4/22 Reg No: 20538989

KM BROKEN BOW 002  
 CASINO BOMBER N33  
 CASINO ANNIE K48  
**ANGUS** KOUPL'S B&B ACTIVE DUTY 6117  
 GB LINDA X35H  
 GB LINDA M35F

SUMMITCREST COMPLETE 1P55  
 SUMMITCREST PRINCESS OP12  
 DPL UPWARD L70  
 CASINO ANNIE G64  
 R B ACTIVE DUTY 010  
 B&B TESS 9045  
 KOUPL'S B&B METALLIC 6018  
 V D A R PF LINDA 7535

Birth Wt. 83  
 Adj. 205 762  
 Adj. 365 1332

CED	BW	WW	YW	Milk	CW	Marb	RE	Fat	\$W	\$B
+1	+2.9	+87	+136	+20	+57	+0.63	+0.71	-0.002	+76	+143

• Deep bodied, larger framed Bomber son the will work great on cows.  
 • EPD ranking - 3% WW - 10% \$W - 15% YW





V A R GENERATION 2100 - GRANDSIRE OF LOT 36

**36**

**GB Generation G72K**

BD: 2/18/22

Reg No: 20539008

V A R GENERATION 2100  
 DIAMOND GENERATION 41D2  
 DIAMOND JANNET 701B  
**ANGUS**  
 SITZ UPWARD 307R  
 GB LILLY U72B  
 ALC LILLY P72P

CONNELY CONSENSUS 7229  
 SANDPOINT BLACKBIRD 8809  
 21AR ROUNDUP 7005  
 DIAMOND JANNET 7512  
 CONNEALY ONWARD  
 SITZ HENRIETTA PRIDE 81M  
 H A R B HIGH PLAINS 975 JH  
 ALC LILLY R03L

Birth Wt.  
**99**  
 Adj. 205  
**741**  
 Adj. 365  
**1381**

CED	BW	WW	YW	Milk	CW	Marb	RE	Fat	\$W	\$B
-10	+7.1	+87	+146	+11	+74	+0.82	+0.83	-0.030	+45	+188

\* EPD ranking - 5% WW, CW, \$F, \$B - 10% YW, MW - 25% RADG, RE, \$G, \$C

**Angus Bulls**



*Ravellette*

**37**

**GB Cavalry X47K**

BD: 1/21/22

Reg No: 20539044

DIAMOND CAVALRY 239C  
 DIAMOND CAVALRY 02G3  
 DIAMOND ANNIE X571  
**ANGUS**  
 JINDRA 3RD DIMENSION  
 GB QUEEN TIBBIE D47F  
 GB QUEEN TIBBIE 2647

JVC CAVALRY V3326  
 DIAMOND LUCY 988Z  
 MYTTY IN FOCUS  
 DIAMOND ANNIE 865R  
 JINDRA DOUBLE VISION  
 JINDRAS SAPPHIRE J 417  
 KESSLERS FRONTMAN R001  
 T K QUEEN TIBBIE S47

Birth Wt.  
**82**  
 Adj. 205  
**774**  
 Adj. 365  
**1374**

CED	BW	WW	YW	Milk	CW	Marb	RE	Fat	\$W	\$B
+6	+0.8	+78	+140	+27	+64	+0.26	+0.34	+0.028	+69	+130

• Looking to add some frame, this is the bull. 3rd Dimension on the bottom side. Cavalry 02G3 was the high weaning weight bull of the 2019 Diamond Dot production sale.  
 • EPD ranking - 10% WW, YW, MW, PAP - 20% CEM, \$W, \$F

**38**

**GB Cavalry C17K**

BD: 3/7/22

Reg No: 20538990

DIAMOND CAVALRY 239C  
 DIAMOND CAVALRY 02G3  
 DIAMOND ANNIE X571  
**ANGUS**  
 HA PRIME CUT 4493  
 GB PROGRESS P16F  
 BROOKDALE PROGRESS 716

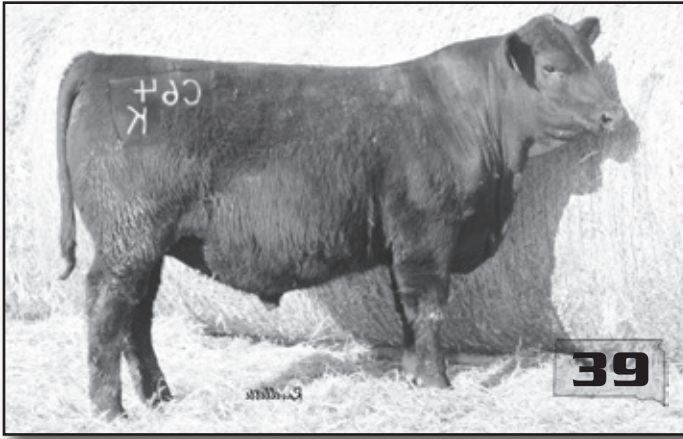
JVC CAVALRY V3326  
 DIAMOND LUCY 988Z  
 MYTTY IN FOCUS  
 DIAMOND ANNIE 865R  
 VERMILION SIRLOIN  
 HA MISS BLACKCAP 9127  
 BROOKDALE RESPONDER 63  
 BROOKDALE PROGRESS 396

Birth Wt.  
**75**  
 Adj. 205  
**754**  
 Adj. 365  
**1228**

CED	BW	WW	YW	Milk	CW	Marb	RE	Fat	\$W	\$B
+12	-0.9	+61	+102	+25	+40	+0.46	+0.70	+0.015	+62	+122

• Don't discount this March calf. Much more of the same with these Diamond Cavalry 02G3 sons.  
 • EPD ranking - 10% CED, CEM, DMI - 25% SC





**39** **GB Cavalry C64K** Reg No: 20538997  
 BD: 1/27/22

DIAMOND CAVALRY 239C DIAMOND CAVALRY 02G3 DIAMOND ANNIE X571 <b>ANGUS</b> KOUPAL'S B&B METALLIC 6018 GB CHLOE M64F RC CHLOE 1764	JVC CAVALRY V3326 DIAMOND LUCY 988Z MYTTY IN FOCUS DIAMOND ANNIE 865R CONNEALY FULL METAL B&B BLACKCAP 0068 DL INCENTIVE 228 BASIN CHLOE U518	Birth Wt. <b>98</b> Adj. 205 <b>758</b> Adj. 365 <b>1326</b>
----------------------------------------------------------------------------------------------------------------------------------------------------	--------------------------------------------------------------------------------------------------------------------------------------------------------------------	-----------------------------------------------------------------------------

CED	BW	WW	YW	Milk	CW	Marb	RE	Fat	\$W	\$B
-2	+4.4	+78	+131	+27	+57	+0.16	+0.70	-0.026	+63	+132

- 02G3 has 8 offspring on the sale rationing 111 at weaning and 107 at yearling. Dam unfortunately lost her 2nd calf but has recorded a NR 2 @ 111.
- EPD ranking - 10% WW - 15% YW, RADG, DMI, MW - 25% PAP, \$F

**40** **GB Cavalry X13K** Reg No: 20539033  
 BD: 1/27/22

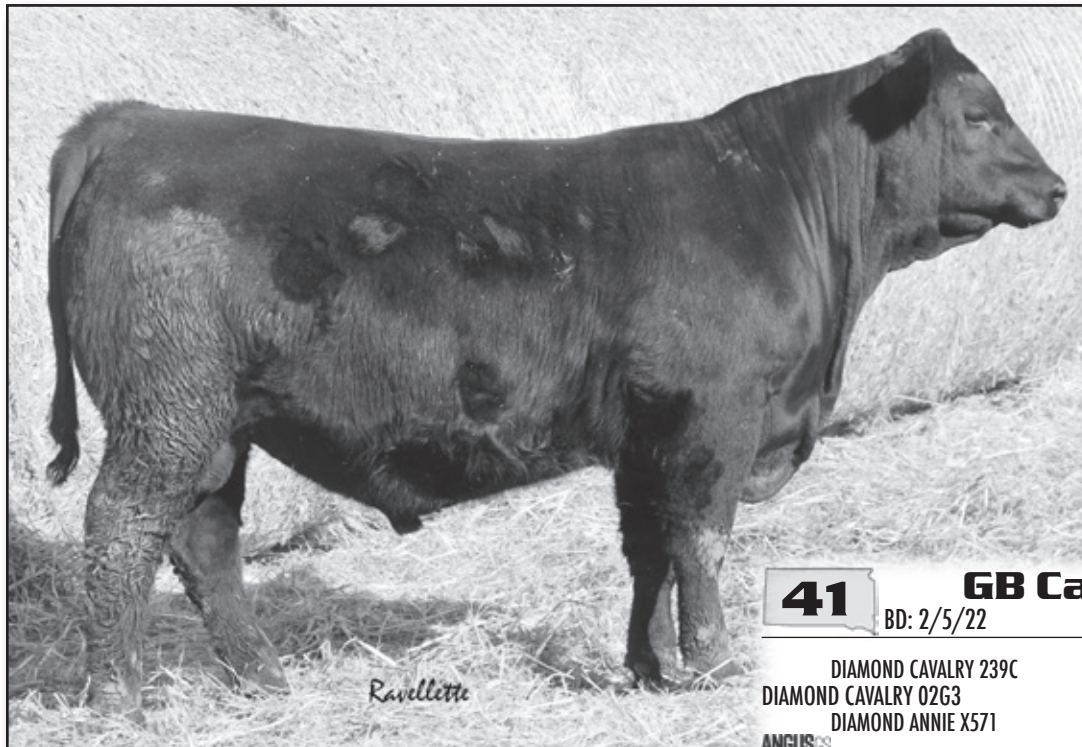
DIAMOND CAVALRY 239C DIAMOND CAVALRY 02G3 DIAMOND ANNIE X571 <b>ANGUS</b> BARSTOW CASH GB RACHEL H13F ALC RACHEL N04T	JVC CAVALRY V3326 DIAMOND LUCY 988Z MYTTY IN FOCUS DIAMOND ANNIE 865R SITZ DASH 10277 BARSTOW QUEEN W16 B/R NEW FRONTIER 095 ALC RACHEL G07J	Birth Wt. <b>95</b> Adj. 205 <b>741</b> Adj. 365 <b>1440</b>
-----------------------------------------------------------------------------------------------------------------------------------------	-------------------------------------------------------------------------------------------------------------------------------------------------------------------	-----------------------------------------------------------------------------

CED	BW	WW	YW	Milk	CW	Marb	RE	Fat	\$W	\$B
+2	+2.9	+80	+140	+22	+60	+0.07	+0.58	+0.024	+65	+124

- 3rd largest yearling weight bull in the sale with an ADG of 4.37. More bone, more frame, and more weight. Barstow Cash X ALC Rachel N04T on the bottom side. Large frame cows with good udders.
- EPD ranking - 5% Doc - 10% WW, YW - 20% MW, \$F



BARSTOW CASH - GRANDSIRE OF LOT 40



**41** **GB Cavalry X16K** Reg No: 20539035  
 BD: 2/5/22

DIAMOND CAVALRY 239C DIAMOND CAVALRY 02G3 DIAMOND ANNIE X571 <b>ANGUS</b> S A V WIND CHILL 3442 GB TREASURE K16F GB TREASURE V16C	JVC CAVALRY V3326 DIAMOND LUCY 988Z MYTTY IN FOCUS DIAMOND ANNIE 865R APEX WINDY 078 S A V BLACKCAP MAY 4136 V D A R REALLY WINDY 1523 GB TREASURE C15A	Birth Wt. <b>76</b> Adj. 205 <b>681</b> Adj. 365 <b>1201</b>
-----------------------------------------------------------------------------------------------------------------------------------------------------	------------------------------------------------------------------------------------------------------------------------------------------------------------------------------	-----------------------------------------------------------------------------

CED	BW	WW	YW	Milk	CW	Marb	RE	Fat	\$W	\$B
+8	+0.1	+68	+105	+31	+32	+0.04	+0.46	-0.002	+74	+77

- EPD ranking - 15% SC, PAP, \$W - 25% BW, DMI, Milk, Angle





**42** **GB Cavalry X28K** BD: 1/30/22 Reg No: 20539039

DIAMOND CAVALRY 239C  
 DIAMOND CAVALRY 02G3  
 DIAMOND ANNIE X571  
**ANGUS**  
 KROUPALS B&B NIKON 7020  
 GB PRINCESS N66G  
 GB PRINCESS U66C

JVC CAVALRY V3326  
 DIAMOND LUCY 988Z  
 MYTTY IN FOCUS  
 DIAMOND ANNIE 865R  
 KROUPALS B&B NIKON 5035  
 B&B BLKBD PROGRESS 4089  
 VISION UNANIMOUS 1418  
 ALC PRINCESS Y66T

Birth Wt.  
**86**  
 Adj. 205  
**684**  
 Adj. 365  
**1239**

CED	BW	WW	YW	Milk	CW	Marb	RE	Fat	SW	SB
+1	+3.2	+88	+148	+24	+60	+0.63	+0.54	+0.026	+75	+140

- More compact, correct Cavalry son.
- EPD ranking - 5% WW, YW - 10% Angle, SC, MW, \$W

**43** **GB Cavalry X73K** BD: 1/26/22 Reg No: 20539051

DIAMOND CAVALRY 239C  
 DIAMOND CAVALRY 02G3  
 DIAMOND ANNIE X571  
**ANGUS**  
 KROUPALS B&B NIKON 7020  
 GB BLACKCAP N73G  
 GB BLACKCAP T73D

JVC CAVALRY V3326  
 DIAMOND LUCY 988Z  
 MYTTY IN FOCUS  
 DIAMOND ANNIE 865R  
 KROUPALS B&B NIKON 5035  
 B&B BLKBD PROGRESS 4089  
 R B TOUR OF DUTY 177  
 GB BLACKCAP T71Y

Birth Wt.  
**78**  
 Adj. 205  
**684**  
 Adj. 365  
**1294**

CED	BW	WW	YW	Milk	CW	Marb	RE	Fat	SW	SB
+8	+0.4	+71	+120	+28	+50	+0.17	+0.57	+0.008	+69	+116

- Long hips and lots of rib shape in these Cavalry sons.
- EPD ranking - 20% CEM, MW, \$W - 25% WW



**44**

**GB Cavalry X89K**

BD: 1/31/22

Reg No: 20539053

DIAMOND CAVALRY 239C  
DIAMOND CAVALRY 02G3  
DIAMOND ANNIE X571  
**ANGUS**  
BARSTOW CASH  
GB RACHEL H89D  
ALC RACHEL N04T

JVC CAVALRY V3326  
DIAMOND LUCY 988Z  
MYTTY IN FOCUS  
DIAMOND ANNIE 865R  
SITZ DASH 10277  
BARSTOW QUEEN W16  
B/R NEW FRONTIER 095  
ALC RACHEL G07J

Birth Wt.  
**83**  
Adj. 205  
**818**  
Adj. 365  
**1468**

CED	BW	WW	YW	Milk	CW	Marb	RE	Fat	\$W	\$B
+10	+1.5	+80	+145	+33	+69	+0.69	+0.56	+0.007	+76	+165

- X89K is the top yearling weight bull of the sale produced by another Barstow Cash X N04T daughter. X89K even had a minor setback having his head stuck in a gate earlier this winter.
- EPD ranking - 5% Doc, SC, DMI, CEM, MW - 10% WW, YW, CW, \$W, \$F - 20% CED, Milk, \$B - 25% \$C



**47**

**GB Advocate A66K**

BD: 2/4/22

Reg No: 20497511

KG JUSTIFIED 3023  
M R A ADVOCATE 9035  
M R A BLACKBIRD 6362  
**ANGUS**  
BASIN PAYWEIGHT 1682  
SUA PAYWEIGHT EXPSUNSET 7366  
SUA EXPECTATION SUNSET U8400

CONNELLY JUDGMENT  
KG MISS MAGIC 1443  
CONNELLY ARSENAL 2174  
MRA BLACKBIRD 0072  
BASIN PAYWEIGHT 006S  
21AR O LASS 7017  
G A R EXPECTATION 6901  
S U A 616 SUNSET 9110

Birth Wt.  
**85**  
Adj. 205  
**609**  
Adj. 365  
**1089**

CED	BW	WW	YW	Milk	CW	Marb	RE	Fat	\$W	\$B
+8	+1.0	+64	+113	+33	+39	+0.53	+0.35	+0.039	+70	+117

- A calving ease son of the \$25,000 MRA Advocate that has shown outstanding offspring in many herds in South Dakota and Montana.
- A nice EPD set follows lot 47 with added growth, SC, HP, and foot score numbers. His dam comes from the great Sunset cow family that built the Spear U Angus herd in Western South Dakota.

**45**

**GB Advocate A22K**

BD: 2/6/22

Reg No: 20557423

KG JUSTIFIED 3023  
M R A ADVOCATE 9035  
M R A BLACKBIRD 6362  
**ANGUS**  
SINCLAIR EXTRAVAGANT 6X7  
OX BOW BARBARAMERE JET 122  
OX BOW BARBARAMERE JET 716

CONNELLY JUDGMENT  
KG MISS MAGIC 1443  
CONNELLY ARSENAL 2174  
MRA BLACKBIRD 0072  
N BAR EMULATION EXT  
SINCLAIR LADY 2P30 8146  
WOODHILL FORESIGHT  
OX BOW BARBARAMERE JET 125

Birth Wt.  
**90**  
Adj. 205  
**703**  
Adj. 365  
**1167**

CED	BW	WW	YW	Milk	CW	Marb	RE	Fat	\$W	\$B
+1	+2.1	+60	+105	+35	+30	+0.32	+0.23	+0.017	+65	+92

- EPD ranking - 5% Claw, SC - 10% Milk - 25% HP
- A high maternal bred bull with an even set of EPDs and performance numbers. The dam Ox Bow Barbaramere Jet 122 is a proven cow from generations of this female making cow family that was purchased from Ox Bow Angus of Montana. High scrotal, heifer pregnancy, maternal and foot score EPDs.

**46**

**GB Advocate A43K**

BD: 1/28/22

Reg No: 20497510

KG JUSTIFIED 3023  
M R A ADVOCATE 9035  
M R A BLACKBIRD 6362  
**ANGUS**  
CONNELLY BEST OPTION  
SUA DORA OF BO 2343  
SUA RH OF DORA 604J

CONNELLY JUDGMENT  
KG MISS MAGIC 1443  
CONNELLY ARSENAL 2174  
MRA BLACKBIRD 0072  
G A R PREDESTINED  
BLACK CRANE OF CONANGA 204  
SPEAR U RANCH HAND 8303  
SUA 5U22 DORA 0516

Birth Wt.  
**90**  
Adj. 205  
**669**  
Adj. 365  
**1241**

CED	BW	WW	YW	Milk	CW	Marb	RE	Fat	\$W	\$B
+2	+2.7	+67	+115	+23	+49	+0.48	+0.34	+0.006	+59	+129

- A deep bodied Advocate son with solid performance numbers behind him. He carries himself well an all four corners with a great top line with above average SC, HP, DOC, and foot score EPDs.



BASIN PAYWEIGHT 1632 - GRANDSIRE OF LOT 47





**48**

**GB Resilient R86K**

BD: 1/21/22

Reg No: 20539029

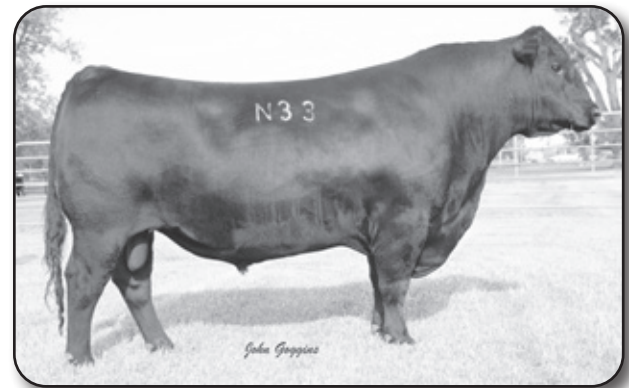
SITZ STELLAR 726D  
SITZ RESILIENT 10208  
SITZ MISS BURGESS 1856  
**ANGUS**  
CASINO BOMBER N33  
GB PROGRESS B86H  
GB PROGRESS S86C

MOHNEN SUBSTANTIAL 272  
SITZ PRIDE 200B  
SITZ TOP GAME 561X  
SITZ MISS BURGESS 4381  
KM BROKEN BOW 002  
CASINO ANNIE K48  
S CHISUM 6175  
BROOKDALE PROGRESS 286

Birth Wt.  
**76**  
Adj. 205  
**696**  
Adj. 365  
**1235**

CED	BW	WW	YW	Milk	CW	Marb	RE	Fat	\$W	\$B
+5	+1.3	+73	+114	+19	+39	+0.70	+0.82	-0.019	+66	+131

- Resilient sons have been very popular as of late with lots of style. Would use on heifers or cows. Resilient x Bomber combination.
- EPD ranking - 2% HP - 10% Angle - 15% CEM, \$M - 20% WW, HS - 25% Claw, RE, \$W, \$G



CASINO BOMBER N33 - GRANDSIRE OF LOT 48

**49**

**GB Resilient R40K**

BD: 1/28/22

Reg No: 20539028

SITZ STELLAR 726D  
SITZ RESILIENT 10208  
SITZ MISS BURGESS 1856  
**ANGUS**  
DL INCENTIVE 228  
RC KARAMA 140  
DL KARAMA 39

MOHNEN SUBSTANTIAL 272  
SITZ PRIDE 200B  
SITZ TOP GAME 561X  
SITZ MISS BURGESS 4381  
S A V FINAL ANSWER 0035  
DL PRINCESS 233  
BOYD NEW DAY 8005  
DL KARAMA 256

Birth Wt.  
**80**  
Adj. 205  
**700**  
Adj. 365  
**1257**

CED	BW	WW	YW	Milk	CW	Marb	RE	Fat	\$W	\$B
+5	+2.1	+84	+135	+30	+61	+0.49	+0.62	+0.001	+84	+135

- EPD ranking - 5% WW, \$W - 15% YW - 25% Milk, CW

**50**

**GB Resilient R11K**

BD: 2/4/22

Reg No: 20539026

SITZ STELLAR 726D  
SITZ RESILIENT 10208  
SITZ MISS BURGESS 1856  
**ANGUS**  
BASIN RAINMAKER 4404  
GB BLACKCAP R11H  
GB BLACKCAP C11F

MOHNEN SUBSTANTIAL 272  
SITZ PRIDE 200B  
SITZ TOP GAME 561X  
SITZ MISS BURGESS 4381  
BASIN RAINMAKER 2704  
BASIN JOY 1036  
HA COWBOY UP 5405  
ALC BLACKCAP N11T

Birth Wt.  
**79**  
Adj. 205  
**649**  
Adj. 365  
**1179**

CED	BW	WW	YW	Milk	CW	Marb	RE	Fat	\$W	\$B
+4	+2.8	+78	+136	+29	+63	+0.40	+0.87	-0.023	+71	+153

- Moderate framed
- EPD ranking - 1% Claw, Angle - 5% HP, \$M - 10% WW, HS - 15% YW, SC, CEM, \$W, \$F, \$C = 20% MW, CW, RE





**51 GB Pathfinder P19K**  
 BD: 1/27/22 Reg No: 20539025

LT ENTERPRISE 5213  
 KOUPLS B&B PATHFINDER 8106  
 B&B BLKBD PROGRESS 3015  
**ANGUS** KOUPLS B&B COMMANDER 7068  
 GB TREASURE X18H  
 GB TREASURE H18F

CONNEALY CAPITALIST 028  
 LT ERICA 0121  
 KOUPLS B&B IDENTITY  
 B&B BLKBD PROGRESS 0049  
 VINTAGE COMMANDER 4152  
 B&B ERICA 605  
 BROOKDALE CASH 665  
 GB TREASURE C15A

Birth Wt. 74  
 Adj. 205 717  
 Adj. 365 1283

CED	BW	WW	YW	Milk	CW	Marb	RE	Fat	\$W	\$B
+10	-1.2	+66	+106	+30	+40	+0.86	+0.71	+0.054	+76	+129

- Sleep all night calving ease bull. A mating that Bud would enjoy with B&B Blkbd Progress 3015 and B&B Erica 605.
- EPD ranking - 5% Angle - 10% BW - 15% HP, \$M, \$W - 20% CED, CEM - 25% Milk, Marb, \$G



**52 GB Crackerjack G20K**  
 BD: 1/28/22 Reg No: 20562301

MUSGRAVE 316 STUNNER  
 MUSGRAVE CRACKERJACK  
 MUSGRAVE RITO JET A649  
**ANGUS** KOUPLS B&B NIKON 7020  
 GB BLACKCAP N73H  
 GB BLACKCAP C73B

LD CAPITALIST 316  
 MCATL BLACKBIRD 831-1378  
 MUSGRAVE BIG SKY  
 G C F MISS NEW LEVEL R216  
 KOUPLS B&B NIKON 5035  
 B&B BLKBD PROGRESS 4089  
 CONNEALY CONSENSUS 7229  
 GB BLACKCAP 2071

Birth Wt. 75  
 Adj. 205 639  
 Adj. 365 1242

CED	BW	WW	YW	Milk	CW	Marb	RE	Fat	\$W	\$B
+4	+2.0	+72	+137	+30	+55	+0.75	+0.46	+0.032	+65	+156

- Could use on large framed heifers or cows.
- EPD ranking - 5% RADG, HS - 10% SC - 15% YW, MW, \$F - 20% Doc, WW, Milk



MUSGRAVE CRACKERJACK - SIRE OF LOT 52





**53**

**GB Con Plus M20K**

BD: 2/6/22

Reg No: 20539014

CONNEALY CONFIDENCE PLUS  
BROOKDALE CON PLUS 720  
BROOKDALE FOREVER LADY 463  
**ANGUS**  
ICC PAY RAISE 4886  
GB QUEEN Y20F  
GB QUEEN U20D

CONNEALY CONFIDENCE 0100  
ELBANNA OF CONANGA 1209  
CONNEALY CONSENSUS 7229  
BROOKDALE FOREVER LADY 180  
MILL COULEE PAY RAISE  
ICC BLACKBIRD 0739  
BRUIN UPROAR 0070  
ALC QUEEN R16U

Birth Wt.  
78  
Adj. 205  
656  
Adj. 365  
1269

CED	BW	WW	YW	Milk	CW	Marb	RE	Fat	\$W	\$B
+12	-0.4	+62	+124	+32	+55	+0.52	+0.52	+0.053	+63	+141

- A real stout made 720 son out of a moderate, wide topped, big middle payraise daughter.
- EPD ranking - 2% Claw, Angle - 15% Doc, CED, CEM, Milk - 20% BW - 25% YW, RADG, \$F

**55**

**GB Con Plus X17K**

BD: 2/7/22

Reg No: 20539036

CONNEALY CONFIDENCE PLUS  
BROOKDALE CON PLUS 720  
BROOKDALE FOREVER LADY 463  
**ANGUS**  
HA COWBOY UP 5405  
GB COWBOY UP C17G  
GB HAZEL B17B

CONNEALY CONFIDENCE 0100  
ELBANNA OF CONANGA 1209  
CONNEALY CONSENSUS 7229  
BROOKDALE FOREVER LADY 180  
HA OUTSIDE 3008  
HA BLACKCAP LADY 1602  
CONNEALY BISMARCK 203 4786  
GB HAZEL T17Y

Birth Wt.  
75  
Adj. 205  
715  
Adj. 365  
1267

CED	BW	WW	YW	Milk	CW	Marb	RE	Fat	\$W	\$B
+8	+2.8	+70	+130	+38	+54	+0.44	+0.38	-0.004	+74	+134

- Brookdale Con Plus 720 has a great set of balanced EPD's, backed by generations of top producing cow lines. He will sire stouter, more aggressive calves at birth that continue to grow in the pasture through weaning.
- EPD ranking - 2% Milk - 10% Claw, \$W - 15% Angle, HS - 20% YW, RADG, \$M - 25% WW

**54**

**GB Con Plus C19K**

BD: 3/4/22

Reg No: 20558903

CONNEALY CONFIDENCE PLUS  
BROOKDALE CON PLUS 720  
BROOKDALE FOREVER LADY 463  
**ANGUS**  
KROUPALS B&B ACTIVE DUTY 6117  
GB FOREVER LADY K19F  
GB FOREVER LADY W15A

CONNEALY CONFIDENCE 0100  
ELBANNA OF CONANGA 1209  
CONNEALY CONSENSUS 7229  
BROOKDALE FOREVER LADY 180  
R B ACTIVE DUTY 010  
B&B TESS 9045  
WAR UPWARD X215 T115  
SANDPOINT FOREVER LADY 6015

Birth Wt.  
91  
Adj. 205  
669  
Adj. 365  
1274

CED	BW	WW	YW	Milk	CW	Marb	RE	Fat	\$W	\$B
+6	+2.3	+61	+121	+47	+55	+1.09	+0.86	+0.016	+67	+171

- Another March born bull with lots of potential.
- EPD ranking - 1% Milk - 10% Marb, \$G - 15% RE, \$B - 25% \$W

**56**

**GB Con Plus X26K**

BD: 3/7/22

Reg No: 20539037

CONNEALY CONFIDENCE PLUS  
BROOKDALE CON PLUS 720  
BROOKDALE FOREVER LADY 463  
**ANGUS**  
S CHISUM 6175  
GB HARRIET S26F  
GB HARRIET W26A

CONNEALY CONFIDENCE 0100  
ELBANNA OF CONANGA 1209  
CONNEALY CONSENSUS 7229  
BROOKDALE FOREVER LADY 180  
S ALLIANCE 3313  
S GLORIA 464  
WAR UPWARD X215 T115  
GB HARRIET S26X

Birth Wt.  
88  
Adj. 205  
696  
Adj. 365  
1238

CED	BW	WW	YW	Milk	CW	Marb	RE	Fat	\$W	\$B
+5	+2.9	+72	+134	+35	+53	+1.07	+0.56	+0.048	+71	+163

- EPD ranking - 5% Claw, PAP - 10% Milk - 15% YW, Marb, \$W, \$G - 20% Angle, WW, RADG, \$B, \$C

**57 GB Con Plus X36K** BD: 2/27/22 Reg No: 20539041

CONNEALY CONFIDENCE PLUS  
BROOKDALE CON PLUS 720  
BROOKDALE FOREVER LADY 463  
**ANGUS**  
HA COWBOY UP 5405  
GB JILT C36F  
MOHNE JILT 3622

CONNEALY CONFIDENCE 0100  
ELBANNA OF CONANGA 1209  
CONNEALY CONSENSUS 7229  
BROOKDALE FOREVER LADY 180  
HA OUTSIDE 3008  
HA BLACKCAP LADY 1602  
MOHNE SETTLER 90  
MOHNE JILT 1283

Birth Wt. **79**  
Adj. 205  
**707**  
Adj. 365  
**1278**

CED	BW	WW	YW	Milk	CW	Marb	RE	Fat	\$W	\$B
+8	+2.2	+74	+129	+27	+60	+0.26	+0.55	+0.012	+68	+137

• EPD ranking - 10% Claw - 15% \$F - 20% Angle, WW, YW, SC - 25% Doc, MW, RADG, \$W  
• Dam is a Cowboy Up by the popular Mohne Jilt cow family.

**58 GB Con Plus X48K** BD: 2/9/22 Reg No: 20539045

CONNEALY CONFIDENCE PLUS  
BROOKDALE CON PLUS 720  
BROOKDALE FOREVER LADY 463  
**ANGUS**  
R B TOUR OF DUTY 177  
GB GOLD LADY T48D  
GB GOLD LADY L48B

CONNEALY CONFIDENCE 0100  
ELBANNA OF CONANGA 1209  
CONNEALY CONSENSUS 7229  
BROOKDALE FOREVER LADY 180  
WERNER WAR PARTY 2417  
B A LADY 6807 305  
S A V PARAMOUNT 0115  
GB GOLD LADY T48

Birth Wt. **72**  
Adj. 205  
**751**  
Adj. 365  
**1282**

CED	BW	WW	YW	Milk	CW	Marb	RE	Fat	\$W	\$B
+4	+3.6	+73	+140	+45	+64	+0.40	+0.83	-0.025	+71	+151

• EPD ranking - 1% Milk - 10% YW, RADG, MW - 15% CW, \$W, \$F - 20% WW, RE

**59 GB Con Plus X50K** BD: 1/26/22 Reg No: 20539047

CONNEALY CONFIDENCE PLUS  
BROOKDALE CON PLUS 720  
BROOKDALE FOREVER LADY 463  
**ANGUS**  
JINDRA ACCLAIM  
GB EILEENMEER A49G  
GB EILEENMEER W49B

CONNEALY CONFIDENCE 0100  
ELBANNA OF CONANGA 1209  
CONNEALY CONSENSUS 7229  
BROOKDALE FOREVER LADY 180  
JINDRA 3RD DIMENSION  
JINDRA BLACKBIRD LASSY 1111  
WAR UPWARD X215 T115  
GB EILEENMEER U49

Birth Wt. **76**  
Adj. 205  
**682**  
Adj. 365  
**1250**

CED	BW	WW	YW	Milk	CW	Marb	RE	Fat	\$W	\$B
+8	+1.6	+78	+143	+31	+71	+0.76	+0.78	+0.013	+77	+179

• EPD ranking - 5% RADG, \$F, \$C - 10% WW, YW, CW, \$W, \$B - 15% Claw, CEM, \$M - 20% Milk, Angle

**60 GB Active Duty X39K** BD: 3/3/22 Reg No: 20539042

R B ACTIVE DUTY 010  
GMAR ACTIVE DUTY F129  
GMAR IMAGE MAKER X306  
**ANGUS**  
CONNEALY CONSENSUS 7229  
GB TREASURE C39A  
ALC TREASURE C50P

LCC NEW STANDARD  
B A LADY 6807 305  
H A IMAGE MAKER 0415  
GMAR ALLIANCE 6290  
CONNEALY CONSENSUS  
BLUE LILLY OF CONANGA 16  
CONNEALY FOREFRONT  
ALC BALDRIDGE TREASURE 137J

Birth Wt. **86**  
Adj. 205  
**681**  
Adj. 365  
**1276**

CED	BW	WW	YW	Milk	CW	Marb	RE	Fat	\$W	\$B
+10	+1.0	+54	+93	+21	+25	+0.56	+0.16	+0.010	+49	+103

• EPD ranking - 10% SC, Angle - 15% Claw - 20% CED

**61 GB Active Duty X65K** BD: 2/22/22 Reg No: 20539049

R B ACTIVE DUTY 010  
GMAR ACTIVE DUTY F129  
GMAR IMAGE MAKER X306  
**ANGUS**  
S A V RESOURCE 1441  
GB EVERGREEN R65B  
GB EVERGREEN R65

LCC NEW STANDARD  
B A LADY 6807 305  
H A IMAGE MAKER 0415  
GMAR ALLIANCE 6290  
RITO 707 OF IDEAL 3407 7075  
S A V BLACKCAP MAY 4136  
ALC MEDALLION G90M  
GB EVERGREEN N81

Birth Wt. **83**  
Adj. 205  
**713**  
Adj. 365  
**1313**

CED	BW	WW	YW	Milk	CW	Marb	RE	Fat	\$W	\$B
+9	+0.4	+63	+107	+29	+45	+0.19	+0.61	+0.040	+67	+105

• A really nice GMAR Active Duty son here by GB Evergreen R65B. Grandam of Lot 1.  
• EPD ranking - 5% Angle - 10% Claw - 15% \$M - 25% SC, \$W



GMAR ACTIVE DUTY F129 - SIRE OF LOTS 60 & 61

**62 GB Nikon X59K** BD: 2/20/22 Reg No: 20539048

KOUPALS B&B NIKON 5035  
KOUPALS B&B NIKON 7020  
B&B BLKBD PROGRESS 4089  
**ANGUS**  
S A V RESOURCE 1441  
GB BLACKCAP R59D  
GB BLACKCAP T59Y

S A V HARVESTOR 0338  
B&B ERICA 605  
ELLINGSON FINAL ANSWER 0026  
B&B BLKBD PROGRESS 108  
RITO 707 OF IDEAL 3407 7075  
S A V BLACKCAP MAY 4136  
ALC TANGO B18T  
ALC BLACKCAP J59T

Birth Wt. **95**  
Adj. 205  
**678**  
Adj. 365  
**1152**

CED	BW	WW	YW	Milk	CW	Marb	RE	Fat	\$W	\$B
+2	+4.0	+58	+107	+17	+49	+0.08	+0.38	+0.018	+34	+114

• EPD ranking - 15% Claw - 25% Angle, MW

---

---

---

---

---

---

---

---

---

---





**63**

**GB Cavalry K12**

BD: 1/22/22

1/4 SM; 3/4 AN

DIAMOND CAVALRY 239C  
DIAMOND CAVALRY 02G3  
DIAMOND ANNIE X571

JINDRA 3RD DIMENSION  
GB LYNETTE 120F  
GB/SAS A120

JVC CAVALRY V3326  
DIAMOND LUCY 988Z  
MYTTY IN FOCUS  
DIAMOND ANNIE 865R  
JINDRA DOUBLE VISION  
JINDRAS SAPPHIRE J 417  
GB/SAS MIDNIGHT TRAVELER  
GB/SAS LYNETTE U120

Birth Wt.  
**94**  
Adj. 205  
**800**  
Adj. 365  
**1443**

CED	BW	WW	YW	Milk	CW	Marb	RE	Fat	SW	SB

• 3/4 Angus 120F is the picture of perfection for commercial mans herd. Great udder, good mothering ability and raises pounds in the pasture. K12 hit the ground and never looked back. He is good footed big boned and sure to add lbs at the sale barn. He is a can't miss herd sire.

**64**

**GB Mogul K44**

BD: 1/24/22

1/4 SM; 3/4 AN

LD CAPITALIST 316  
BROOKDALE MOGUL  
BROOKDALE ZARA 597

SAS BITTEN D612  
GB HARRIET 44H  
GB HARRIET B434

CONNELY CAPITALIST 028  
LD DIXIE ERICA 2053  
JMB TRACTION 292  
BROOKDALE ZARA 229  
ERIXON BITTEN 203A  
SAS DONELLA X612  
CONNELY BISMARCK 203 4786  
GB HARRIET M77

Birth Wt.  
**82**  
Adj. 205  
**729**  
Adj. 365  
**1175**

CED	BW	WW	YW	Milk	CW	Marb	RE	Fat	SW	SB

• 3/4 Angus Brookdale Mogul Simmental cross. Moderates the Simmental a bit with not as much birth.  
• Bull with a big middle and good hip.



**65**

**GB Con Plus K30**

BD: 2/15/22

1/4 SM; 3/4 AN

CONNEALY CONFIDENCE PLUS  
BROOKDALE CON PLUS 720  
BROOKDALE FOREVER LADY 463

S A V REGISTRY  
GB TONYA X30F  
GB/SAS TONYA XL30

CONNEALY CONFIDENCE 0100  
ELBANNA OF CONANGA 1209  
CONNEALY CONSENSUS 7229  
BROOKDALE FOREVER LADY 180  
RITO 707 OF IDEAL 3407 7075  
S A V MADAM PRIDE 0075  
SAS H3 TITAN  
GB/SAS TONYA TL30B

Birth Wt.  
**103**  
Adj. 205  
**705**  
Adj. 365  
**1237**

CED	BW	WW	YW	Milk	CW	Marb	RE	Fat	SW	SB

- ¾ Angus
- Very consistent cow family. Will add pounds at the sale barn.

**66**

**GB Antidote K20**

BD: 2/9/22

1/4 SM; 3/4 AN

ERIXON BITTEN 203A  
SAS ANTIDOTE F046  
KBHR B377

CONNEALY CONSENSUS 7229  
GB LYNETTE 120D  
GB/SAS LYNETTE U120

NCB COBRA 474  
BMD MISS BLK ICEDANCER  
HOOKS ZEBULON 59Z  
KBHR 2324  
CONNEALY CONSENSUS  
BLUE LILLY OF CONANGA 16  
LCHMAN LUCKY BUCK 7049C  
SAS LYNETTE

Birth Wt.  
**105**  
Adj. 205  
**837**  
Adj. 365  
**1315**

CED	BW	WW	YW	Milk	CW	Marb	RE	Fat	SW	SB

- ¾ Angus Bull does have scurs.

**67**

**GB Cavalry K15**

BD: 1/20/22

Reg No: 1/4 SM; 3/4 AN

DIAMOND CAVALRY 239C  
DIAMOND CAVALRY 02G3  
DIAMOND ANNIE X571

**ANGUS**  
KOUPLAS B&B ACTIVE DUTY 6117  
GBSA MAGNOLIA 015G  
GB/SAS MT AR15

JVC CAVALRY V3326  
DIAMOND LUCY 988Z  
MYTTY IN FOCUS  
DIAMOND ANNIE 865R  
R B ACTIVE DUTY 010  
B&B TESS 9045  
GB/SAS MIDNIGHT TRAVELER  
SAS/GB MAGNOLIA R015

Birth Wt.  
**68**  
Adj. 205  
**688**  
Adj. 365  
**1123**

CED	BW	WW	YW	Milk	CW	Marb	RE	Fat	SW	SB

- ¾ Angus

**Thank you for  
your support and  
for attending our sale!**



We strive to continue to produce cattle that I know my dad would be proud of and to keep his mission alive. He believed the commercial cattleman came first and it is our job to help in their success.





# Raven Pleasant View H585

Reg: AAA \*19933523



Raven Powerball 53  
Raven Pleasant View D212  
SIRE Raven Blackbird 610  
Hoover Dam  
Raven Brazila D715  
DAM Brazila of Conanga 3991 839A

For Semen orders call  
Derek 605-830-0788

# Brookdale Mogul

Reg: AAA \*19550403



Connealy Capitalist 028  
LD Capitalist 316  
SIRE LD Dixie Erica 2053  
JMB Traction 292  
Brookdale Zara 597  
DAM Brookdale Zara 229

SEMIN AVAILABLE







29933 329th Ave.  
Dallas, SD 57529

FIRST CLASS MAIL  
U.S. POSTAGE  
**PAID**  
PHILIP, SD  
PERMIT NO. 20

## First Class Mail

Address Service Requested

