

GRAESSER BROS.



Join us for our 13th Annual Production Sale

**MONDAY,
FEBRUARY 21, 2022**

Winner Livestock Auction, Winner, SD

Sale at 12:30 PM CST



Featuring an Outstanding set of Brookdale Mogul sons!!

Derek Graesser
605.830.0788

Kevin Graesser

Rod Graesser
605.835.8039 or
605.830.2029



Cattlemen.

W
E
L
C
O
M
E

On behalf of the Graesser Bros. families, we would like to invite you to our 13th annual bull sale. I feel like I say it every year, but we are a resilient group. We somehow find a way to battle through the everyday challenges of this industry and keep moving forward. I feel fortunate to have strong individuals in our community and the cattle industry to learn from and lean on. Again, I want to say we are eternally thankful for the people around us and the community that we are a part of. You all have been endlessly supportive, of not only our program, but of our families and we are truly blessed.

We creep feed the last month before weaning to get them acclimated to feed and have continued with a growing ration after weaning, allowing the bulls to attain the longevity and fertility that you, the commercial cattleman, needs. There seems to be enough issues and trying times out there without artificially adding to any potential problems. The bulls have been semen checked, so you can purchase with confidence. The catalog order is also the sale order of the bulls.

As you will notice, some of our bull bred sires have performed just as well, if not even outperformed the AI sired bulls. When selecting these bulls we make sure that the dam has performed exceptionally well. We have been very satisfied with Brookdale Mogul's first calf crop as they have performed wonderfully all through the year. We also used two bulls sired by our Generation 41D2 out of some of our best cow lines.

Up for offering will be: 58 yearling Angus bulls, 3 two year old Angus bulls, 9 Sim-Angus bulls, and 1 Sim-Angus two year old. The yearling Angus bulls were DNA tested and will have genetically enhanced EPDs along with parentage results. By using genomics, in our opinion, we are getting enough added accuracy on our EPDs to forgo having to do any ultrasounding.

We feel that adding longevity through cattle fertility, structural soundness, and genetic selection plays a major role in keeping our customers thoroughly satisfied. The bulls are not fed in a way that will limit their ability to get out and do their job, which is to produce genetically superior offspring.

We have not changed anything as far as our guarantee and discounts on sale bulls. There is an additional \$100 discount if you haul your own bull(s) on sale day. Otherwise, we would like to start deliveries the first part of April. If you have any further questions, or would like to view the bulls, you are more than welcome to visit the ranch anytime before sale day. We do encourage you to see the bulls in their own environment.

We are looking forward to seeing you all on Monday, February 21st, at the Winner Livestock Auction. Sale time is set for 12:30 p.m. CT. Come early, see the bulls, and have a meal with us!

The Graessers



In Loving Memory of **Kevin Graesser**

Aside from his family, there is nothing our Dad loved more than being a rancher and raising his family on the same ground he was raised on. He didn't do it because it was easy; he did it because he genuinely loved what this way of life gave him. A year ago as we were preparing for the sale, I remember him saying it's the hardworking, humble, and honest people that make being a part of this business worth it.

He was as good and honest as they come. The kind of man it just felt good to be around. He wanted to succeed, but more importantly, he wanted those around him to succeed. His kind and humble spirit made him a friend to individuals from all walks of life. How lucky we were as a family to get to share in that with him.

This past year has been anything but easy for our family. The void our Dad left in our lives at times feels impossible to carry. But we continue to push on, in many ways because we are given no other choice, but more importantly because we hope to continue to live out what he started. To continue to live out his vision, that if you work hard, have faith, take care of your family and friends, that good will come to you in one way or another. Although it can sometimes be hard to find the good in this world, we firmly believe he would want us to continue to look for it. Because to him, there was so much good in being able

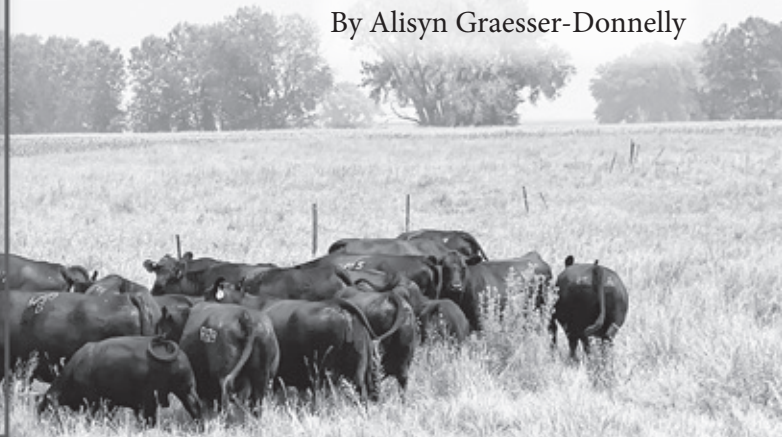
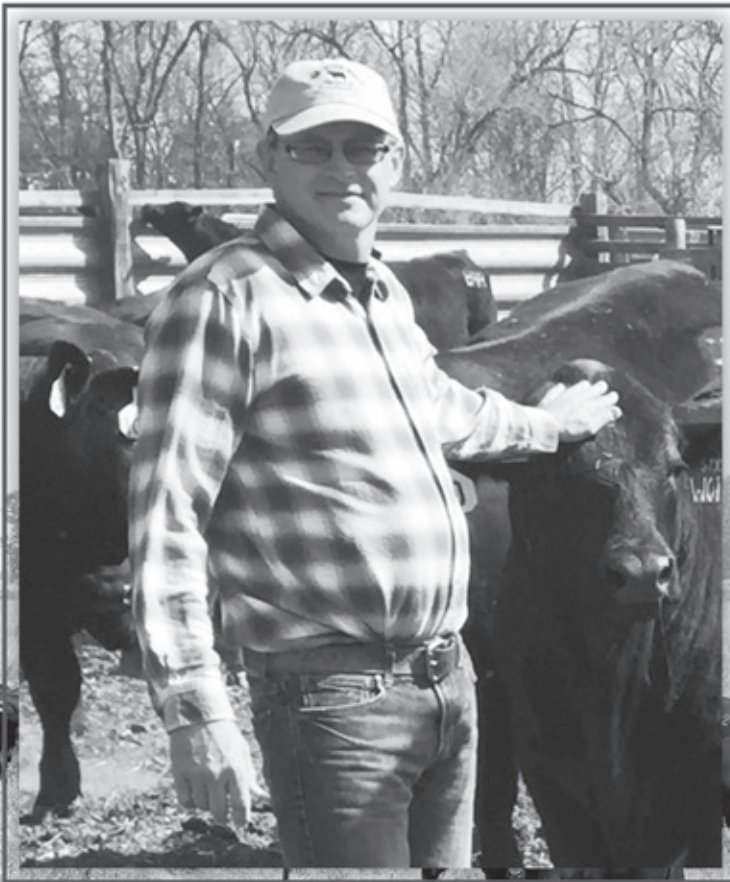


to raise and love his family on a piece of land that his parents, and their parents once did the same.

He fought so hard for this way of life and for others to be able to do the same. He fought to make an honest living and for fairness in an industry that at times feels anything but. So as his family, we hope and pray to continue to do the same while upholding the integrity he instilled in all of us.

We love him. We miss him, oh so dearly. But we continue to push on, to make him proud, all while surrounding ourselves with good, hardworking people he brought into our lives for all these years.

By Alisyn Graesser-Donnelly





Join us for our 13th Annual Production Sale

Monday,

February 21, 2022

Winner Livestock Auction,

Winner, SD

Sale at 12:30 PM CST

Sale Location:

Winner Livestock Auction 605-842-0451
31690 Livestock Barn Road, Winner, SD 57580

Auctioneer: Cody Moore 605-222-1453

Sale Consultant: Joseph Kvigne (605) 670-1785

Livestock Representatives:

Don Ravellette, Cattleman's Invite 605-685-5147
Curt Littau, Tri-State Livestock News 605-840-0978
Tate Williams, Independent 605-999-0018
Jack Sieban, Nutritionist 605-660-9975

Lodging Reservations:

Holiday Inn Express, Winner, SD (605) 842-2255

Herd Health:

We have an aggressive herd health program by Dr. Eric Heath, Animal Clinic, Winner, SD. Dr. Heath will fertility test the sale bulls in this year's sale, and will be available sale day to answer any questions.

Brand Inspection Documents:

All bulls will be accompanied by proper brand inspection papers at time of shipment. A brand inspector will be available sale day.

Volume Discount:

Will be offered starting at three bulls - 3%; and increasing 1% for each additional bull up to 10 bulls - 10% maximum discount.

Sight Unseen Policy:

Graesser Bros. will guarantee complete satisfaction on any lots purchased on order.

Trucking/Delivery:

Bulls will be delivered free of charge in South Dakota and bordering states. If you take your bulls home on sale day, you will receive \$100 off each bull purchased.

Supplement Sheet:

Bulls will sell in catalog order. Updated EPDs will be available through American Angus Association.

Inspection of the Cattle:

Bulls will be available for viewing prior to the sale at the Graesser Ranch. On sale day, the bulls will be at the Winner Livestock Auction.

Lot Numbers:

Lot numbers on the sale cattle correspond with the numbers in the catalog.

Liabilities:

All persons attending this sale do so at their own risk. The owners and agents assume no liability, legal or otherwise, for any accidents which may occur.

Terms:

Cattle will sell under the Standard Terms & Conditions as recommended by the American Angus Association.

Food and Refreshments:

A complimentary lunch will be provided, starting at 11:00 a.m. CT.

Insurance:

Martin-Trudeau Insurance will be available sale day.

Guarantee:

All bulls selling for \$3,000 or more are guaranteed against breeding injury for the first breeding season. Breeding season is defined as the 90-day period following the first turnout of bulls. If a replacement bull is available, he will be provided, or if the buyer prefers, credit toward one bull will be given in the following year's sale, less salvage value of the injured bull. Please notify us as soon as possible should injury occur and prior to the injured bull being sold for salvage.

Bull Videos:

Videos of the bulls will be online at www.GraesserBros.com

**Videos and sale will be available
on DVAuctions.com**

DVAuction
Broadcasting Real-Time Auctions

Sale Day, call Derek Graesser 605-830-0788

Derek Graesser
605-830-0788

Rod Graesser
605-835-8039 or
605-830-2029

www.GraesserBros.com

2 | Graesser Bros Annual Production Sale

Catalog produced by:

RPI Promotions

Don Ravellette (605) 685-5147
Beau Ravellette (605) 685-8155
P.O. Box 788 • Philip, South Dakota 57567
www.rpipromotions.com



Reference Sires



Brookdale Mogul

BD: 01/20/2019

Reg No: *19550403

Tattoo: 249

CONNEALY CAPITALIST 028
LD CAPITALIST 316
LD DIXIE ERICA 2053
JMB TRACTION 292
BROOKDALE ZARA 597
BROOKDALE ZARA 229

S A V FINAL ANSWER 0035
PRIDES PITA OF CONANGA 8821
C A FUTURE DIRECTION 5321
LD DIXIE ERICA OAR 0853
SITZ TOP GAME 561X
JMB EMULOTA 013
HARB PENDLETON 765 J H
ALC O ZARA R29L

CED	BW	WW	YW	Milk	CW	Marb	RE	Fat	\$W	\$B
+8	+0.4	+72	+122	+28	+53	+0.42	+0.83	+0.037	+84	+135



U-2 Coalition 206C

BD: 01/23/2015

Reg No: *18626847

Tattoo: 206C

CONNEALY CONSENSUS 7229
HF SYNDICATE 213Z
HF MISS BLACKCAP 27R
YOUNG DALE XCLUSIVE 25X
U2 ERELITE 109Z
U-2 ERELITE 1X

CONNEALY CONSENSUS
BLUE LILLY OF CONANGA 16
TC FREEDOM 104
HF MISS BLACKCAP 50N
YOUNG DALE KNOCK OUT 134U
YOUNG DALE POLLYANNA 60T
S A V FINAL ANSWER 0035
U-2 ERELITE 8109U

CED	BW	WW	YW	Milk	CW	Marb	RE	Fat	\$W	\$B
+9	+0.8	+58	+117	+24	+45	+0.36	+0.58	-0.016	+54	+142



GB Generation G11G

BD: 01/26/2019

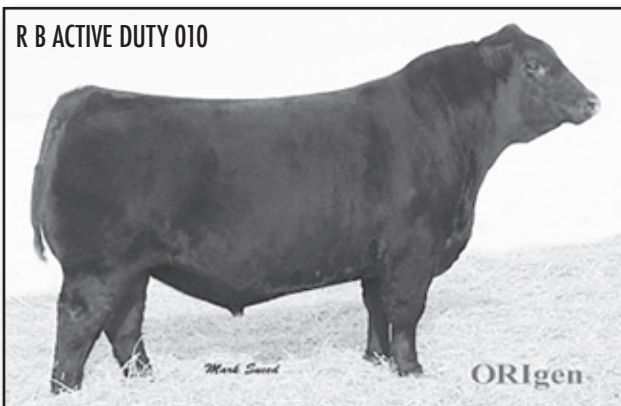
Reg No: *19635376

Tattoo: G11G

V A R GENERATION 2100
DIAMOND GENERATION 41D2
DIAMOND JANNET 701B
WOODHILL DAYBREAK U280-X20
PONCA CREEK BLACKBIRD 711
PONCA CREEK BLACKBIRD 955

CONNEALY CONSENSUS 7229
SANDPOINT BLACKBIRD 8809
21AR ROUNDUP 7005
DIAMOND JANNET 7512
MCC DAYBREAK
WOODHILL EVERGREEN 285M-U280
CONNEALY ALL AROUND
PONCA CREEK BLACKBIRD 675

CED	BW	WW	YW	Milk	CW	Marb	RE	Fat	\$W	\$B
+12	-0.7	+69	+119	+25	+63	+0.99	+0.58	+0.037	+73	+173



R B ACTIVE DUTY 010

Koupals B&B ACTIVE Duty 6117

BD: 01/29/2016

Reg No: *18605436

Tattoo: 6117

LCC NEW STANDARD
R B ACTIVE DUTY 010
B A LADY 6807 305
CONNEALY THUNDER
B&B TESS 9045
B&B TESS 3055

BON VIEW NEW DESIGN 1407
LCC SUNSET K3118
VERMILION DATELINE 7078
G D LADY HI FLYER 302
BALDRIDGE KABOOM K243 KCF
PARKA OF CONANGA 241
BALDRIDGE LEON L92
BEEFLAND TESS 4017

CED	BW	WW	YW	Milk	CW	Marb	RE	Fat	\$W	\$B
+4	+2.2	+58	+99	+24	+31	+0.30	+0.33	+0	+57	+103



1

GB Mogul M24J

BD: 1/20/21

Reg No: 20258620

Birth Wt.

92

Adj. 205

756

Adj. 365

1476

Scrotal

37.65

ADG

4.50

LD CAPITALIST 316
BROOKDALE MOGUL
BROOKDALE ZARA 597
ANGUS
WAR UPWARD X215 T115
GB BLACKBIRD W24B
ALC BLACKBIRD B24R

CONNEALY CAPITALIST 028
LD DIXIE ERICA 2053
JMB TRACTION 292
BROOKDALE ZARA 229
SITZ UPWARD 307R
WAR RITO T115 416 4257
B C C BUSHWACKER 41-93
ALC BLACKBIRD G44M

CED	BW	WW	YW	Milk	CW	Marb	RE	Fat	\$W	\$B
+9	+1.0	+76	+130	+28	+58	+0.43	+0.78	-0.013	+86	+140

• WW-110 YW-115

• M24J is a real standout in the bull pen. This powerhouse bull has lots of length, width, and stands great on his feet. Upward length with Mogul correctness. Highest Angus yearling weight bull in the sale. His dam, W24B, finally produced a bull and he didn't disappoint. She has multiple daughters in production that are doing well.



BROOKDALE MOGUL - SIRE OF LOT 1



BROOKDALE ZARA 597 - DAM OF BROOKDALE MOGUL

**Mogul genetics blend
well with many different
bloodlines...As you will see
throughout the catalog**



2 **GB Mogul M64J**
 BD: 2/12/21 Reg No: 20259806

LD CAPITALIST 316
 BROOKDALE MOGUL
 BROOKDALE ZARA 597
 R B TOUR OF DUTY 177
 GB EVERGREEN T65D
 GB EVERGREEN R65B

CONNEALY CAPITALIST 028
 LD DIXIE ERICA 2053
 JMB TRACTION 292
 BROOKDALE ZARA 229
 WERNER WAR PARTY 2417
 B A LADY 6807 305
 S A V RESOURCE 1441
 GB EVERGREEN R65

Birth Wt. **78**
 Adj. 205 **704**
 Adj. 365 **1437**
 Scrotal **39.91**
 ADG **4.58**

CED	BW	WW	YW	Milk	CW	Marb	RE	Fat	\$W	\$B
+10	-0.6	+65	+118	+20	+50	+0.18	+0.81	+0.001	+63	+122

- WW-103 YW-113
- Mogul sons came off looking great after weaning but really excelled in the feed yard. This bull is deep and wide with huge growth after weaning. Mogul sons are going to be sound structured and deep ribbed. Top 1% in Claw and 2% in Angle. Out of a long Tour of Duty daughter with extra capacity and a great production record.
- Dam NR-4@108



GB EVERGREEN T65D - DAM OF LOT 2



We cannot say enough about Mogul!! His sons in this year's sale carry big rib structure, eye appeal, performance, and show excellent muscle composition. Many sale highlights from this powerful herd sire.



3 **GB Mogul M25J**

BD: 1/22/21 Reg No: 20258621

LD CAPITALIST 316
BROOKDALE MOGUL
BROOKDALE ZARA 597
ANGUS
WAR UPWARD X215 T115
GB PLEASANT PRIDE W25A
ALC PLEASANT PRIDE Y255

CONNEALY CAPITALIST 028
LD DIXIE ERICA 2053
JMB TRACTION 292
BROOKDALE ZARA 229
SITZ UPWARD 307R
WAR RITO T115 416 4257
HYLINE RIGHT TIME 338
ASSMAN PLEASANT PRIDE A20L

Birth Wt. 85
Adj. 205 709
Adj. 365 1394
Scrotal 40.21
ADG 4.28

CED	BW	WW	YW	Milk	CW	Marb	RE	Fat	SW	SB
+11	+0.7	+65	+108	+33	+49	+0.47	+0.79	+0.017	+84	+133

- WW-104 YW-109
- These Mogul offspring did not disappoint. Something about these Upward x Mogul crosses that really worked. W25A has yet to miss a beat with another Mogul bull calf on the ground this year.
- NR-6@105

HERD SIRE PROSPECT HERE!!

The dam of lot 3 is packed full of maternal genetics! She goes back to ALC Pleasant Pride Y255, Leachman Right Time, and Sitz Alliance 6595.

High maternal and body composition!

DON'T OVERLOOK THE GOOD ONES!



GB PLEASANT PRIDE W25A - DAM OF LOT 3

4**GB Mogul M72J**

BD: 2/1/21

Reg No: 20258627

LD CAPITALIST 316
BROOKDALE MOGUL
BROOKDALE ZARA 597

ANGUS

SITZ UPWARD 307R
GB LILLY U72B
ALC LILLY P72P

CONNELLY CAPITALIST 028
LD DIXIE ERICA 2053
JMB TRACTION 292
BROOKDALE ZARA 229
CONNELLY ONWARD
SITZ HENRIETTA PRIDE 81M
H A R B HIGH PLAINS 975 JH
ALC LILLY R03L

Birth Wt. **96**
Adj. 205 **757**
Adj. 365 **1375**
Scrotal **38.53**
ADG **3.86**

CED	BW	WW	YW	Milk	CW	Marb	RE	Fat	\$W	\$B
-1	+3.7	+73	+118	+30	+48	+0.45	+0.63	+0.001	+77	+125

• WW-111 YW-108

• More of the same from Mogul. This Mogul has a little more frame and is long hipped.

• Looking for pounds at weaning, this is the bull. Pathfinder dam.

• NR-5@105



Angus Bulls

5**GB Mogul M48J**

BD: 2/1/21

Reg No: 20258624

LD CAPITALIST 316
BROOKDALE MOGUL
BROOKDALE ZARA 597

ANGUS

BALDRIDGE NEXT STEP Y108
GB GOLD LADY N48D
GB GOLD LADY Y48A

CONNELLY CAPITALIST 028
LD DIXIE ERICA 2053
JMB TRACTION 292
BROOKDALE ZARA 229
WOODHILL MAINLINE
BALDRIDGE MAVERICK T43
H A R B WINDY 702 JH
GB GOLD LADY T48

Birth Wt. **84**
Adj. 205 **729**
Adj. 365 **1417**
Scrotal **37.06**
ADG **4.30**

CED	BW	WW	YW	Milk	CW	Marb	RE	Fat	\$W	\$B
+5	+1.1	+69	+122	+18	+47	+0.46	+0.87	-0.027	+66	+135

• WW-106 YW-111

• Mogul sons ratioed 105 overall in both WW and YW. The production out of these bulls tells the story. Top 3% in Claw. Great bull for cows.

**6****GB Infinity Y71J**

BD: 2/17/21

Reg No: 20258642

KOUPALS B&B DETAIL 7070
KOUPALS B&B INFINITY 9012
B&B ZARA 6078

ANGUS

BALDRIDGE WILLIE Y34
GB BLACKCAP W71D
GB BLACKCAP W71A

KOUPALS B&B ON COURSE 5068
B&B LASSIE 3049
S TITLES 1145
B&B ZARA 4038
BALDRIDGE WAYLON W34
BALDRIDGE DUCHESS T69
WAR UPWARD X215 T115
GB BLACKCAP F71X

Birth Wt. **79**
Adj. 205 **672**
Adj. 365 **1331**
Scrotal **38.07**
ADG **4.12**

CED	BW	WW	YW	Milk	CW	Marb	RE	Fat	\$W	\$B
+6	-0.6	+71	+121	+31	+41	+0.46	+0.73	+0.004	+86	+123

• WW-98 YW-104

• This bull really has become a standout as of late. Deep gutted, big hipped, and square made, out of a Baldrige Willie daughter. These Koupal B&B Infinity sons look to be the real deal.

• NR-3@105





8

BD: 2/5/21

GB Cavalry X07J

Reg No: 20259807

R B ACTIVE DUTY 010
KROUPALS B&B ACTIVE DUTY 6117
B&B TESS 9045
ANGUS S TITLEST 1145
GB PLEASANT PRIDE T06E
GB PLEASANT PRIDE U06C

LCC NEW STANDARD
B A LADY 6807 305
CONNEALY THUNDER
B&B TESS 3055
RA LINCOLN W144
S CORA 572
BRUIN UPROAR 0070
GB PLEASANT PRIDE 2706

Birth Wt. **89**
Adj. 205 **702**
Adj. 365 **1350**
Scrotal **41.35**
ADG **4.05**

CED	BW	WW	YW	Milk	CW	Marb	RE	Fat	SW	SB
+7	-0.5	+59	+106	+34	+40	+0.49	+0.45	+0.027	+75	+122

- WW-102 YW-105
- X07J has the HERD BULL look. Deep gutted with a powerful hip. I have been impressed with the production of our Titlest daughters. This cross, with our 6117 bull worked well.
- NR-3@100

9

BD: 2/4/21

GB Prime Cut P94J

Reg No: 20258634

VERMILION SIRLOIN
HA PRIME CUT 4493
HA MISS BLACKCAP 9127
ANGUS HARB PENDLETON 765 J H
LAGRAND MISS PENDLETON 9394
LAGRAND MISS HORIZON 7527

TC FRANKLIN 619
VERMILION LASS 8482
HA PROGRAM 5652
H A MISS BLACKCAP 1250
S A V FINAL ANSWER 0035
H A R B BLACK LADY 375 J H
B C MARATHON 7022
LAGRAND MISS HORIZON 3395

Birth Wt. **90**
Adj. 205 **686**
Adj. 365 **1358**
Scrotal **39.55**
ADG **4.20**

CED	BW	WW	YW	Milk	CW	Marb	RE	Fat	SW	SB
+5	+4.1	+78	+134	+25	+55	+0.51	+0.60	+0.027	+71	+135

- WW-100 YW-106
- Our one and only HA Prime Cut son. His full brother was the Lot 9 bull in the 2019 bull sale, selling to Andrew Laprath. Here is a bull that has lots of breeding years ahead of him. His 13 year old dam is still in production with another calf due this month.



10**GB Presidential P81J**

BD: 1/21/21

Reg No: 20267144

S A V PRESIDENT 6847
BROOKDALE PRESIDENTIAL 1059
BROOKDALE PROGRESS 371

ANGUS

S A V WIND CHILL 3442
GB RACHEL C81C
GB RACHEL 2080

COLEMAN CHARLO 0256
S A V BLACKCAP MAY 4136
SITZ UPWARD 307R
BROOKDALE PROGRESS 422
APEX WINDY 078
S A V BLACKCAP MAY 4136
CONNEALY IMPRESSION
GB RACHEL S80X

Birth Wt. 83
Adj. 205 694
Adj. 365 1321
Scrotal 39.68
ADG 3.92

CED	BW	WW	YW	Milk	CW	Marb	RE	Fat	\$W	\$B
+6	+1.5	+68	+122	+37	+38	+0.11	+0.55	-0.048	+85	+100

• WW-101 YW-103

• Top 15% in HP and SC. Long hiped and standing wide at his base, he will be sure to add lbs at the sale barn. Backed by a great maternal pedigree. P81J goes back to SAV Blackcap May 4136 on both the top and bottom side. Brookdale Presidential sons averaged over \$8000 dollars on Stevensons Diamond Dot sale last fall.



Angus Bulls

11**GB Coalition C61J**

BD: 1/31/21

Reg No: 20271156

HF SYNDICATE 213Z
U-2 COALITION 206C
U2 ERELITE 109Z

ANGUS

BUSSMUS MOTIVE 3014
GB LYN B61D
ALC LYN S61U

CONNEALY CONSENSUS 7229
HF MISS BLACKCAP 27R
YOUNG DALE XCLUSIVE 25X
U-2 ERELITE 1X
SOO LINE MOTIVE 1038
WK JEWEL 6433
S A V 8180 TRAVELER 004
ALC LYN T03L

Birth Wt. 85
Adj. 205 712
Adj. 365 1419
Scrotal 45.03
ADG 4.42

CED	BW	WW	YW	Milk	CW	Marb	RE	Fat	\$W	\$B
+3	+3.0	+74	+132	+32	+60	+0.49	+0.58	+0.009	+78	+144

• WW-104 YW-111

• If you are looking for a bull to produce some great females, here he is. Spring of rib, long hiped, great footed with large testicles to boot. C61J was also the 3rd highest yearling weight Angus bull with an ADG of 4.42 after weaning.

• NR-2@104

**12****GB Coalition C27J**

BD: 1/9/21

Reg No: 20271249

HF SYNDICATE 213Z
U-2 COALITION 206C
U2 ERELITE 109Z

ANGUS

KOUPALS B&B IDENTITY
KR MISS PRIMROSE 3027
WK MISS PRIMROSE 0195

CONNEALY CONSENSUS 7229
HF MISS BLACKCAP 27R
YOUNG DALE XCLUSIVE 25X
U-2 ERELITE 1X
SITZ UPWARD 307R
B&B ERICA 605
WK VEGAS
FV MISS PRIMROSE R402

Birth Wt. 82
Adj. 205 740
Adj. 365 1345
Scrotal 39.30
ADG 3.78

CED	BW	WW	YW	Milk	CW	Marb	RE	Fat	\$W	\$B
+8	+0.5	+61	+112	+27	+38	+0.63	+0.43	+0.021	+64	+141

• WW-108 YW-105

• Lots of muscle. Thick from birth to yearling.

**13****GB Coalition C12J**

BD: 1/7/21

Reg No: 20271248

HF SYNDICATE 213Z
U-2 COALITION 206C
U2 ERELITE 109Z

ANGUS

LT WESTPORT 1076
MAR FOREVER OF 1076 4012
SD FOREVER 720

CONNEALY CONSENSUS 7229
HF MISS BLACKCAP 27R
YOUNG DALE XCLUSIVE 25X
U-2 ERELITE 1X
LT BRISTOL 9011
LT PRAIRIE SCOTCH 7094
HARB PENDLETON 765 J H
SD FOREVER 7058 692E ET

Birth Wt. 87
Adj. 205 664
Adj. 365 1221
Scrotal 38.23
ADG 3.48

CED	BW	WW	YW	Milk	CW	Marb	RE	Fat	\$W	\$B
+9	+0.4	+54	+98	+27	+47	+0.23	+0.47	+0.026	+59	+124

• WW-97 YW-96

• This is a well put together bull that gets out and moves with ease. Out of a moderate cow with great mothering ability.





Ravellette

14

14

GB Mogul M83J

BD: 1/31/21

Reg No: 20258630

LD CAPITALIST 316
BROOKDALE MOGUL
BROOKDALE ZARA 597
ANGUS
CONNEALY BLACK GRANITE
SRS ELBA 5283C
S R S ELBA 7141T

CONNEALY CAPITALIST 028
LD DIXIE ERICA 2053
JMB TRACTION 292
BROOKDALE ZARA 229
CONNEALY CONSENSUS 7229
EURA ELGA OF CONANGA 9109
S A V 004 DENSITY 4336
S R S ELBA 0184L

Birth Wt. 83
Adj. 205 722
Adj. 365 1356
Scrotal 39.50
ADG 3.96

CED	BW	WW	YW	Milk	CW	Marb	RE	Fat	SW	SB
+5	+2.5	+77	+127	+26	+60	+0.37	+0.92	+0.039	+80	+141

• WW-105 YW-106

• Back to another Mogul son out of a very nice looking Pathfinder cow I picked up from Skinner Ranch in Hall, MT. She had a very beautiful Capitalist 316 daughter the year before and I believe the Mogul cross worked just as well. Mogul offspring have been very consistent no matter the type of cow we use him on, maternal or power.

• NR- 5@105



Ravellette

15



SRS ELBA 5283C - DAM OF LOT 14

15

BD: 1/18/21

GB Enhance E74J

Reg No: 20258605

SYDGEN EXCEED 3223
SYDGEN ENHANCE
SYDGEN RITA 2618
ANGUS
500 LINE MOTIVE 9016
GB PRIDE M74A
500 LINE PRIDE 1174

SYDGEN GOOGOL
SYDGEN FOREVER LADY 1255
SYDGEN LIBERTY GA 8627
FOX RUN RITA 9308
HF KODIAK 5R
TLA BEAUTY 5R
S A V IRON MAN 8195
DWAJO PRIDE 44P

Birth Wt. 85
Adj. 205 705
Adj. 365 1276
Scrotal 40.08
ADG 3.57

CED	BW	WW	YW	Milk	CW	Marb	RE	Fat	SW	SB
+7	-0.3	+58	+102	+25	+42	+0.50	+0.59	+0.005	+64	+130

• WW-116 YW-105

• Another standout since calving season last year. These Motive daughters have worked well here. Soft made with great udders.

• NR-6@101



16 **GB Mogul M15J**
 BD: 1/20/21 Reg No: 20258618

LD CAPITALIST 316 BROOKDALE MOGUL BROOKDALE ZARA 597 ANGUS CONNEALY CONSENSUS 7229 GB TREASURE C15A ALC TREASURE C50P	CONNEALY CAPITALIST 028 LD DIXIE ERICA 2053 JMB TRACTION 292 BROOKDALE ZARA 229 CONNEALY CONSENSUS BLUE LILLY OF CONANGA 16 CONNEALY FOREFRONT ALC BALDRIDGE TREASURE 137J	Birth Wt. 86 Adj. 205 739 Adj. 365 1278 Scrotal 32.65 ADG 3.37
---	---	---

CED	BW	WW	YW	Milk	CW	Marb	RE	Fat	\$W	\$B
+10	+0.3	+67	+117	+25	+45	+0.60	+0.49	+0.018	+73	+132

- WW-108 YW-100
- You will be sure to find this bull in the pen. He is a moderate framed tank, sure to work well on both heifers and cows. He has a great female producing line up on the bottom side, along with Mogul and JMB Traction on the top.
- NR- 6 @103

17 **GB Mogul M43J**
 BD: 1/16/21 Reg No: 20251823

LD CAPITALIST 316 BROOKDALE MOGUL BROOKDALE ZARA 597 CONNEALY BEST OPTION SUA DORA OF BO 2343 SUA RH OF DORA 604J	CONNEALY CAPITALIST 028 LD DIXIE ERICA 2053 JMB TRACTION 292 BROOKDALE ZARA 229 G A R PREDESTINED BLACK CRANE OF CONANGA 204 SPEAR U RANCH HAND 8303 SUA 5U22 DORA 0516	Birth Wt. 78 Adj. 205 730 Adj. 365 1228 Scrotal 36.00 ADG 3.36
--	--	---

CED	BW	WW	YW	Milk	CW	Marb	RE	Fat	\$W	\$B
+8	+0.3	+53	+93	+25	+34	+0.44	+0.53	+0.026	+56	+119

- This calving ease son of Mogul has the stamp of his sire in his phenotype, with big rib structure and wide top line. The dam of lot 17 comes from a long line of high maternal cows from the Dora cow family of the Spear U Angus herd. M43J will produce the feminine, high maternal daughters that will be of top quality and kept as replacements.



**18****GB Generation G29J**

BD: 1/14/21

Reg No: 20258608

Birth Wt.

73

Adj. 205

629

Adj. 365

1360

Scrotal

35.48

ADG

4.57

DIAMOND GENERATION 41D2
GB GENERATION G12G
GB BLACKCAP A12E
ANGUS KOUPLS B&B COMMANDER 7068
GB PLEASANT PRIDE V28G
GB PLEASANT PRIDE T28E

V A R GENERATION 2100
DIAMOND JANNET 701B
KOUPLS B&B ATLAS 4061
GB BLACKCAP 2712
VINTAGE COMMANDER 4152
B&B ERICA 605
S TITLET 1145
GB PLEASANT PRIDE V28C

CED	BW	WW	YW	Milk	CW	Marb	RE	Fat	\$W	\$B
+14	-0.5	+70	+122	+30	+44	+0.44	+0.64	-0.002	+86	+123

• WW-101 YW-111

• Sired by the Lot 1 bull out of our 2020 sale, G12G. G29J took off after weaning, gaining 4.57 daily. His dam, V28G, shows lots of promise. She is out of our Pleasant Pride cow family that produces top end bulls and heifers every year. Pleasant Pride and Blackcap family lines were sure to be a good mating. This bull is the real deal.

**19****GB Crackerjack J70J**

BD: 1/26/21

Reg No: 20258610

Birth Wt.

80

Adj. 205

697

Adj. 365

1337

Scrotal

38.87

ADG

4.00

MUSGRAVE 316 STUNNER
MUSGRAVE CRACKERJACK
MUSGRAVE RITO JET A649
ANGUS DIAMOND GENERATION 41D2
GB BLACKCAP G70G
GB BLACKCAP W71D

LD CAPITALIST 316
MCATL BLACKBIRD 831-1378
MUSGRAVE BIG SKY
G C F MISS NEW LEVEL R216
V A R GENERATION 2100
DIAMOND JANNET 701B
BALDRIDGE WILLIE Y34
GB BLACKCAP W71A

CED	BW	WW	YW	Milk	CW	Marb	RE	Fat	\$W	\$B
+4	+1.6	+80	+138	+31	+67	+0.60	+0.76	+0.013	+89	+161

• WW-114 YW-110

• An all around good numbered bull. It's been exciting to see how these Generation 41D2 daughters have grown. Grandam is the dam to lot 6.

**20****GB Generation G06J**

BD: 1/7/21

Reg No: 20258606

Birth Wt.

70

Adj. 205

666

Adj. 365

1314

Scrotal

33.26

ADG

4.05

DIAMOND GENERATION 41D2
GB GENERATION G11G
PONCA CREEK BLACKBIRD 711
ANGUS KOUPL'S B&B METALLIC 6018
GB PLEASANT PRIDE M06G
GB PLEASANT PRIDE 2706

V A R GENERATION 2100
DIAMOND JANNET 701B
WOODHILL DAYBREAK U280-X20
PONCA CREEK BLACKBIRD 955
CONNEALY FULL METAL
B&B BLACKCAP 0068
S A V FINAL ANSWER 0035
ALC PLEASANT PRIDE 106T

CED	BW	WW	YW	Milk	CW	Marb	RE	Fat	\$W	\$B
+11	+0.6	+82	+141	+20	+70	+0.53	+0.75	-0.019	+76	+166

• WW-107 YW-107

• G11G was a bull we kept interest on from the 2020 sale. G11G is another Generation 41D2 son stemming back to the Ponca Creek 955 cow. I really like how this mating worked on one of our top end Metallic daughters. Big spread from birth to yearling!

**21****GB Bomber B48J**

BD: 1/15/21

Reg No: 20258603

Birth Wt.

75

Adj. 205

649

Adj. 365

1270

Scrotal

37.01

ADG

3.88

KM BROKEN BOW 002
CASINO BOMBER N33
CASINO ANNIE K48
ANGUS KOUPLS B&B NIKON 7020
GB GOLD LADY N48G
GB GOLD LADY T48D

SUMMITCREST COMPLETE 1P55
SUMMITCREST PRINCESS 0P12
DPL UPWARD L70
CASINO ANNIE G64
KOUPLS B&B NIKON 5035
B&B BLKBD PROGRESS 4089
R B TOUR OF DUTY 177
GB GOLD LADY L48B

CED	BW	WW	YW	Milk	CW	Marb	RE	Fat	\$W	\$B
+8	+0.6	+69	+117	+32	+55	+0.31	+0.85	-0.019	+79	+135

• WW-104 YW-104

• Really liked our Casino Bombers last year and only have a couple this year. Calves came easy and have a lot of growth. Top 3% HP and 10% in Docility.

22**GB Coalition C04J**

BD: 1/17/21

Reg No: 20246229

Birth Wt.

81

Adj. 205

744

Adj. 365

1204

Scrotal

33.00

ADG

3.30

HF SYNDICATE 213Z
U-2 COALITION 206C
U2 ERELITE 109Z

V A R INDEX 3282
SUA INDEX EXPSUNSET 7004
SUA EXPECTATION SUNSET U8402

CONNEALY CONSENSUS 7229
HF MISS BLACKCAP 27R
YOUNG DALE XCLUSIVE 25X
U-2 ERELITE 1X
G A R INGENUITY
SANDPOINT BLACKBIRD 8809
G A R EXPECTATION 6901
S U A 616 SUNSET 9110

CED	BW	WW	YW	Milk	CW	Marb	RE	Fat	\$W	\$B
+11	+0.5	+52	+102	+25	+38	+0.59	+0.69	-0.010	+50	+147

• Coalition 206C blended well with the dam of C04J. She has a calving ease and maternal pedigree that extends back to a very high producing donor dam SUA 616 Sunset 9110. A powerful cow family bloodline here, producing big rib, great udders, that have the Angus female look.

**Angus Bulls****23****GB Active Duty K65J**

BD: 1/26/21

Reg No: 20258616

Birth Wt.

93

Adj. 205

783

Adj. 365

1356

Scrotal

40.03

ADG

3.58

DIAMOND CAVALRY 239C
DIAMOND CAVALRY 02G3
DIAMOND ANNIE X571

ANGUS S TITLEST 1145
GB CHLOE T64E

RC CHLOE 1764

JVC CAVALRY V3326
DIAMOND LUCY 988Z
MYTTY IN FOCUS
DIAMOND ANNIE 865R
RA LINCOLN W144
S CORA 572
DL INCENTIVE 228
BASIN CHLOE U518

CED	BW	WW	YW	Milk	CW	Marb	RE	Fat	\$W	\$B
+3	+1.2	+74	+118	+34	+45	+0.37	+0.78	+0.008	+93	+112

• WW-114 YW-106

• The one Diamond Cavalry 02G3 son in the sale. We picked this bull up in the 2019 Diamond Dot sale and was the highest weaning ratio bull that year. Out of a long, wide topped Titlest daughter. This bull could easily be higher up in the sale.

• Dam NR- 3@110

**24****GB Coalition C65J**

BD: 1/27/21

Reg No: 20271250

Birth Wt.

99

Adj. 205

715

Adj. 365

1312

Scrotal

42.39

ADG

3.73

HF SYNDICATE 213Z
U-2 COALITION 206C
U2 ERELITE 109Z

ANGUS S A V PARAMOUNT 0115
GB EVERGREEN 2565
GB EVERGREEN R65

CONNEALY CONSENSUS 7229
HF MISS BLACKCAP 27R
YOUNG DALE XCLUSIVE 25X
U-2 ERELITE 1X
S A V PIONEER 7301
S A V ROSETTA 7428
ALC MEDALLION G90M
GB EVERGREEN N81

CED	BW	WW	YW	Milk	CW	Marb	RE	Fat	\$W	\$B
+5	+3.4	+63	+119	+28	+52	+0.32	+0.62	+0.02	+58	+136

• WW-104 YW-102

• Here's a Coalition with added length and frame. Dam is a good solid producing cow that breeds up every year.

**25****GB Attractive A51J**

BD: 2/10/21

Reg No: 20264423

Birth Wt.

95

Adj. 205

652

Adj. 365

1337

Scrotal

37.82

ADG

4.28

JMB TRACTION 292
SCHIEFELBEIN ATTRACTIVE 4565
FROSTY ANSWER 3979

ANGUS VISION ROYAL FLUSH 1422
GB BLACKCAP R51A
ALC BLACKCAP Y51T

SITZ TOP GAME 561X
JMB EMULOTA 013
S A V FINAL ANSWER 0035
FROSTY ELBA LIZZY 1106
GAMBLES ROYAL FLUSH
VISION SILVER 832
HYLINE RIGHT TIME 338
ALC BLACKCAP K02L

CED	BW	WW	YW	Milk	CW	Marb	RE	Fat	\$W	\$B
+2	+4.4	+79	+142	+32	+53	+0.65	+0.93	-0.052	+80	+149

• WW-95 YW-105

• This Attractive x Royal Flush cross worked out well. A larger framed bull with feedlot growth. He excelled once he was on feed. Good footed bull. Half brother was much the same last year.

26

GB Infinity Y82J

BD: 2/2/21

Reg No: 20258643

Birth Wt.

93

Adj. 205

809

Adj. 365

1254

Scrotal

40.06

ADG

2.78

KOUPALS B&B DETAIL 7070
KOUPALS B&B INFINITY 9012
B&B ZARA 6078

ANGUS

S A V RESOURCE 1441

GB PRIDE R82B

SOO LINE PRIDE 1082

KOUPALS B&B ON COURSE 5068
B&B LASSIE 3049
S TITLEST 1145
B&B ZARA 4038
RITO 707 OF IDEAL 3407 7075
S A V BLACKCAP MAY 4136
HF KODIAK 5R
EXAR PRIDE 84002

CED	BW	WW	YW	Milk	CW	Marb	RE	Fat	\$W	\$B
-1	+4.1	+81	+128	+27	+60	-0.18	+0.96	-0.014	+80	+112

• WW-118 YW-98

• I am a big fan of this Pride cow family. Early maturing, highest weaning weight bull.

• Dams NR-6@104



27

GB Mogul M21J

BD: 1/27/21

Reg No: 20258619

Birth Wt.

88

Adj. 205

726

Adj. 365

1260

Scrotal

40.06

ADG

3.34

LD CAPITALIST 316
BROOKDALE MOGUL
BROOKDALE ZARA 597

ANGUS

SOO LINE MOTIVE 9016

GB BLACKBIRD M24E

GB BLACKBIRD 2524

CONNEALY CAPITALIST 028
LD DIXIE ERICA 2053
JMB TRACTION 292
BROOKDALE ZARA 229
HF KODIAK 5R
TLA BEAUTY 5R
S A V FINAL ANSWER 0035
ALC BLACKBIRD B24R

CED	BW	WW	YW	Milk	CW	Marb	RE	Fat	\$W	\$B
+6	+0.8	+55	+88	+31	+37	+0.55	+0.42	+0.051	+67	+122

• WW-106 YW-99

• Soft made Mogul. There isn't much to fix on this bulls dam. Good udder and small teats, out of the Blackbird family. Same as Lot 1.

28

GB Mogul M59J

BD: 2/4/21

Reg No: 20258626

Birth Wt.

90

Adj. 205

767

Adj. 365

1297

Scrotal

37.73

ADG

3.31

LD CAPITALIST 316
BROOKDALE MOGUL
BROOKDALE ZARA 597

ANGUS

ALC TANGO B18T

GB BLACKCAP T59Y

ALC BLACKCAP J59T

CONNEALY CAPITALIST 028
LD DIXIE ERICA 2053
JMB TRACTION 292
BROOKDALE ZARA 229
E&B 1680 PRECISION 1023
ALC BALDRIDGEFOREVERLADY847J
BOYD ON TARGET 1083
A L C BLACKCAP E03F

CED	BW	WW	YW	Milk	CW	Marb	RE	Fat	\$W	\$B
+1	+2.7	+64	+103	+29	+55	+0.08	+0.85	+0.030	+71	+120

• WW-112 YW-102

• Mogul son out of an 11 year old cow who has earned her keep. 7 sons sold in previous sales with two daughters in production.

• Dams NR-9@108

29**GB Attractive A45J**

BD: 1/30/21

Reg No: 20264328

Birth Wt.

85

Adj. 205

636

Adj. 365

1119

Scrotal

35.47

ADG

3.02

JMB TRACTION 292
SCHIEFELBEIN ATTRACTIVE 4565
FROSTY ANSWER 3979
ANGUS
CONNEALY CONSENSUS 7229
RC CHLOE 1145
BASIN CHLOE U518

SITZ TOP GAME 561X
JMB EMULOTA 013
S A V FINAL ANSWER 0035
FROSTY ELBA LIZZY 1106
CONNEALY CONSENSUS
BLUE LILLY OF CONANGA 16
EXAR 263C
BASIN CHLOE 3R21

CED	BW	WW	YW	Milk	CW	Marb	RE	Fat	\$W	\$B
+9	+1.1	+63	+110	+30	+31	+0.68	+0.45	+0.010	+73	+118

• WW-93 YW-88

• Attractive looks to be the real deal on producing top end quality females. Long, deep bodied, and soft made with perfect udders. They have been our top end heifers the last two years.

31**GB Enhance E59J**

BD: 2/2/21

Reg No: 20258604

Birth Wt.

80

Adj. 205

666

Adj. 365

1330

Scrotal

37.09

ADG

4.15

SYDGEN EXCEED 3223
SYDGEN ENHANCE
SYDGEN RITA 2618
ANGUS
S A V RESOURCE 1441
GB BLACKCAP R59D
GB BLACKCAP T59Y

SYDGEN GOOGOL
SYDGEN FOREVER LADY 1255
SYDGEN LIBERTY GA 8627
FOX RUN RITA 9308
RITO 707 OF IDEAL 3407 7075
S A V BLACKCAP MAY 4136
ALC TANGO B18T
ALC BLACKCAP J59T

CED	BW	WW	YW	Milk	CW	Marb	RE	Fat	\$W	\$B
+3	+2.9	+68	+128	+28	+60	+0.61	+0.78	-0.009	+69	+159

• WW-97 YW-104

• We used Enhance on this Resource daughter to get a little better carcass numbers. R59D is part of the great Blackcap family and half sister to lot 28.

33**GB Coalition C30J**

BD: 1/29/21

Reg No: 20271157

Birth Wt.

—

Adj. 205

647

Adj. 365

1173

Scrotal

42.97

ADG

3.29

HF SYNDICATE 213Z
U-2 COALITION 206C
U2 ERELITE 109Z
ANGUS
BUSSMUS MOTIVE 3014
GB ERICA B30D
METZGER ERICA 130

CONNEALY CONSENSUS 7229
HF MISS BLACKCAP 27R
YOUNG DALE XCLUSIVE 25X
U-2 ERELITE 1X
SOO LINE MOTIVE 1038
WK JEWEL 6433
S A V FINAL ANSWER 0035
BROOKDALE ERICA 408

CED	BW	WW	YW	Milk	CW	Marb	RE	Fat	\$W	\$B
+2	+2.9	+52	+91	+27	+40	+0.40	+0.57	-0.012	+53	+119

• WW-94 YW-92

• Long bodied Coalition son.

30**GB Resource R33J**

BD: 1/13/21

Reg No: 20258635

Birth Wt.

79

Adj. 205

689

Adj. 365

1182

Scrotal

33.92

ADG

3.08

RITO 707 OF IDEAL 3407 7075
S A V RESOURCE 1441
S A V BLACKCAP MAY 4136
ANGUS
CONNEALY CONFIDENCE 0100
GMAR CONFIDENCE B233
GMAR FINAL ANSWER X310

R R RITO 707
IDEAL 3407 OF 1418 076
S A V 8180 TRAVELER 004
S A V MAY 2397
CONNEALY TOBIN
BECKA GALA OF CONANGA 8281
S A V FINAL ANSWER 0035
GMAR NEW LEVEL 5065

CED	BW	WW	YW	Milk	CW	Marb	RE	Fat	\$W	\$B
+12	-0.3	+52	+90	+19	+25	+0.09	+0.69	+0.043	+53	+85

• WW-101 YW-93

• This bull is stacked with top end sires in his pedigree. May be the last Resource we will have to offer. Resource daughters have worked well here on the ranch.

32**GB Spur S94J**

BD: 1/12/21

Reg No: 20258636

Birth Wt.

82

Adj. 205

672

Adj. 365

1258

Scrotal

40.39

ADG

3.66

CONNEALY STIMULUS 8419
CONNEALY SPUR
JAZZA OF CONANGA 8594
ANGUS
CONNEALY BISMARCK 203 4786
GB GAMMER B94A
RED BARN GAMMER 948

H A POWER ALLIANCE 1025
BLACK CREESA OF CONANGA 5332
TC GRID TOPPER 355
JEMMA OF CONANGA 5614
S A V BISMARCK 5682
BLACK CRANE OF CONANGA 204
K DATELINE 149
RED BARN GAMMER 870

CED	BW	WW	YW	Milk	CW	Marb	RE	Fat	\$W	\$B
+8	+2.1	+61	+101	+27	+53	+0.68	+0.64	+0.039	+68	+148

• WW-98 YW-98

• S94J has been consistent all the way through. Out of the old Connealy Spur bull that worked very well at Vermillion Ranch.

34**GB Active Duty K25J**

BD: 2/4/21

Reg No: 20258614

Birth Wt.

79

Adj. 205

607

Adj. 365

1319

Scrotal

41.32

ADG

4.45

R B ACTIVE DUTY 010
KOUNPALS B&B ACTIVE DUTY 6117
B&B TESS 9045
ANGUS
MUSGRAVE AVIATOR
GB RACHEL V25E
GB RACHEL V25C

LCC NEW STANDARD
B A LADY 6807 305
CONNEALY THUNDER
B&B TESS 3055
KOUNPALS B&B IDENTITY
MCATL FOREVER LADY 1429-138
V D A R REALLY WINDY 1523
GB RACHEL B25A

CED	BW	WW	YW	Milk	CW	Marb	RE	Fat	\$W	\$B
+4	+1.7	+68	+113	+29	+44	+0.16	+0.51	+0.025	+76	+108

• WW-89 YW-104

• This bull really took off after weaning and could have easily been a higher lotted bull. Good frame size with a big hip and nice middle.



One of our best set of Sim/Angus bulls start here

**35****GB Active Duty J82**

BD: 2/2/21

Sim/Angus

R B ACTIVE DUTY 010
KROUPALS B&B ACTIVE DUTY 6117
B&B TESS 9045

VISION ROYAL FLUSH 1422
GB BRUZER 82E
GB/SAS BRUZER 820B

LCC NEW STANDARD
B A LADY 6807 305
CONNEALY THUNDER
B&B TESS 3055
GAMBLES ROYAL FLUSH
VISION SILVER 832
SAS BIG BRUZER Y131
GB/SAS U820

Birth Wt. 95
Adj. 205 795
Adj. 365 1511
Scrotal 38.00
ADG 4.74

CED	BW	WW	YW	Milk	CW	Marb	RE	Fat	\$W	\$B
-	-	-	-	-	-	-	-	-	-	-

• Heaviest yearling weight bull in the sale. Out of one of our top producing Simmental cow families with lots of growth in his pedigree. Here is the bull to add real pounds at the sale barn. Check out this bulls daily gain.

37**GB Crackerjack J01**

BD: 1/27/21

Sim/Angus

MUSGRAVE 316 STUNNER
MUSGRAVE CRACKERJACK
MUSGRAVE RITO JET A649

KROUPALS B&B ACTIVE DUTY 6117
GBSA MAGNOLIA 015G
GB/SAS MT AR15

LD CAPITALIST 316
MCATL BLACKBIRD 831-1378
MUSGRAVE BIG SKY
G C F MISS NEW LEVEL R216
R B ACTIVE DUTY 010
B&B TESS 9045
GB/SAS MIDNIGHT TRAVELER
SAS/GB MAGNOLIA R015

Birth Wt. 72
Adj. 205 693
Adj. 365 1264
Scrotal 37.50
ADG 3.60

CED	BW	WW	YW	Milk	CW	Marb	RE	Fat	\$W	\$B
-	-	-	-	-	-	-	-	-	-	-

• This bull is a tank. Low birth Sim/Angus. Sleep all night and watch them grow.

36**GB Active Duty J30**

BD: 2/2/21

Sim/Angus

R B ACTIVE DUTY 010
KROUPALS B&B ACTIVE DUTY 6117
B&B TESS 9045

S A V REGISTRY 2831
GB TONYA X30F
GB/SAS TONYA XL30

LCC NEW STANDARD
B A LADY 6807 305
CONNEALY THUNDER
B&B TESS 3055
RITO 707 OF IDEAL 3407 7075
S A V MADAME PRIDE 0075
SAS H3 TITAN
GB/SAS TL30B TONYA

Birth Wt. 89
Adj. 205 710
Adj. 365 1313
Scrotal 38.00
ADG 3.80

CED	BW	WW	YW	Milk	CW	Marb	RE	Fat	\$W	\$B
-	-	-	-	-	-	-	-	-	-	-

• Another ¾ Angus with added frame, length and growth. These 6117 crosses worked well on Simmentals.



38 GB Presidential J32

BD: 2/2/21

Sim/Angus

Birth Wt. 83
Adj. 205 649
Adj. 365 1237
Scrotal 38.00
ADG 3.71

S A V PRESIDENT 6847
BROOKDALE PRESIDENTIAL 1059
BROOKDALE PROGRESS 371

S A V ANGUS VALLEY 1867
GB MIDNIGHT 31BD
GB/SAS MT A31B

COLEMAN CHARLO 0256
S A V BLACKCAP MAY 4136
SITZ UPWARD 307R
BROOKDALE PROGRESS 422
S A V IRON MOUNTAIN 8066
S A V MAY 2397
GB/SAS MIDNIGHT TRAVELER
GB/SAS W31B

CED	BW	WW	YW	Milk	CW	Marb	RE	Fat	\$W	\$B
-	-	-	-	-	-	-	-	-	-	-

* Looking to use a little more of Presidential on our half bloods after seeing this calf. I think adding Simmental frame with Presidential's crazy wide base and growth will be a sure hit.



Sim/Angus Bulls

40 GB Bitten J38

BD: 3/16/21

Sim/Angus

Birth Wt. 86
Adj. 205 771
Adj. 365 1364
Scrotal 39.00
ADG 3.71

ERIXON BITTEN 203A
SAS BITTEN D612 3167782 BH PP
SAS DONELLA X612

S CHISUM 6175
GB BLACKBIRD S38B
BROOKDALE BLACKBIRD 238

NCB COBRA 47Y
BMD MISS BLK ICE DANCER
SAS T101 SWEET MEAT
N534
S ALLIANCE 3313
S GLORIA 464
TC GRID TOPPER 355
BROOKDALE BLACKBIRD 92

CED	BW	WW	YW	Milk	CW	Marb	RE	Fat	\$W	\$B
-	-	-	-	-	-	-	-	-	-	-

* J38 and J16 are much alike. J38 is out of a soft made Chisum cow and a Bitten son with tons of muscle.



41 GB Bitten J16

BD: 3/6/21

Sim/Angus

Birth Wt. 95
Adj. 205 742
Adj. 365 1448
Scrotal 38.00
ADG 4.42

ERIXON BITTEN 203A
SAS BITTEN 220D
SAS T220 SWEETS

S A V WIND CHILL 3442
GB QUEEN C16C
ALC QUEEN R16U

NCB COBRA 47Y
BMD MISS BLK ICE DANCER
SAS/ASF ALL STAR
SAS SWEETS
APEX WINDY 078
S A V BLACKCAP MAY 4136
LEACHMAN RIGHT TIME
ALC QUEEN NTON

CED	BW	WW	YW	Milk	CW	Marb	RE	Fat	\$W	\$B
-	-	-	-	-	-	-	-	-	-	-

* Adjusted yearling weight in the 1400's. A March calf that keeps on impressing. Look to add frame and bone (pounds) from this guy.

42 GB Nikon J31

BD: 2/25/21

Sim/Angus

Birth Wt. 88
Adj. 205 673
Adj. 365 1311
Scrotal 34.50
ADG 4.02

KOUPALS B&B NIKON 5035
KOUPALS B&B NIKON 7020
B&B BLKBD PROGRESS 4089

GB/SAS MIDNIGHT TRAVELER
GB/SAS MT 131B
GB/SAS W31B

S A V HARVESTOR 0338
B&B ERICA 605
ELLINGSON FINAL ANSWER 0026
B&B BLKBD PROGRESS 108
SAS T101 SWEET MEAT
GB/SAS TOP BLACK S115
SAS T647 RIO BRAVO
GB/SAS EASY 30B

CED	BW	WW	YW	Milk	CW	Marb	RE	Fat	\$W	\$B
-	-	-	-	-	-	-	-	-	-	-

* Really wide based bull out of cow with a huge hip. Nikon was a good cross on Simmentals.

43 GB Mogal J09

BD: 1/27/21

Sim/Angus

Birth Wt. 66
Adj. 205 607
Adj. 365 1186
Scrotal 35.00
ADG 3.65

LD CAPITALIST 316
BROOKDALE MOGUL
BROOKDALE ZARA 597

ERIXON BITTEN 203A
GB/SAS LICORICE E309
SAS LICORICE S532

CONNELLY CAPITALIST 028
LD DIXIE ERICA 2053
JMB TRACTION 292
BROOKDALE ZARA 229
NCB COBRA 47Y
BMD MISS BLK ICE DANCER
SRS J914 PREFERRED BEEF
SAS/GB LICORICE

CED	BW	WW	YW	Milk	CW	Marb	RE	Fat	\$W	\$B
-	-	-	-	-	-	-	-	-	-	-

* More moderate framed half blood. Top notch genetics in the bull's pedigree. Really like this bull's confirmation. Was a twin.

44**GB Bitten J08**

BD: 3/10/21

Sim/Angus

Birth Wt.

98

Adj. 205

728

Adj. 365

1246

Scrotal

36.50

ADG

3.26

ERIXON BITTEN 203A
SAS BITTEN D612 3167782 BH PP
SAS DONELLA X612

GB CONSENSUS C65Z
GB ERICA V08C
GB ERICA Y08A

NCB COBRA 47Y
BMD MISS BLK ICE DANCER
SAS T101 SWEET MEAT
N534
CONNEALY CONSENSUS 7229
ALC TREASURE C50P
H A R B WINDY 702 JH
BROOKDALE ERICA 408

CED	BW	WW	YW	Milk	CW	Marb	RE	Fat	SW	\$B
-	-	-	-	-	-	-	-	-	-	-

• I really like this cross on a wide easy fleshing cow.

45**GB Active Duty H65**

BD: 3/1/20

Sim/Angus

Birth Wt.

90

Adj. 205

652

Adj. 365

1760

Scrotal

39.50

ADG

-

R B ACTIVE DUTY 010
KOUPLAS B&B ACTIVE DUTY 6117
B&B TESS 9045

ERIXON BITTEN 203A
GB/SAS COALMINER 864E
GB/SAS COALMINER X864

LCC NEW STANDARD
B A LADY 6807 305
CONNEALY THUNDER
B&B TESS 3055
NCB COBRA 47Y
BMD MISS BLK ICE DANCER
SAS T101 SWEET MEAT
SAS/GB COALMINER R864

CED	BW	WW	YW	Milk	CW	Marb	RE	Fat	SW	\$B
-	-	-	-	-	-	-	-	-	-	-

• This bull was good enough to sell as a yearling last year but decided to keep him as a 2 year old.

Angus Bulls**47****46****GB Mogul M02J**

BD: 2/6/21

Reg No: 20261359

Birth Wt.

83

Adj. 205

653

Adj. 365

1263

Scrotal

39.88

ADG

3.81

LD CAPITALIST 316
BROOKDALE MOGUL
BROOKDALE ZARA 597

ANGUS BARSTOW CASH
GB RACHEL H02E
ALC RACHEL N04T

CONNEALY CAPITALIST 028
LD DIXIE ERICA 2053
JMB TRACTION 292
BROOKDALE ZARA 229
SITZ DASH 10277
BARSTOW QUEEN W16
B/R NEW FRONTIER 095
ALC RACHEL G07J

CED	BW	WW	YW	Milk	CW	Marb	RE	Fat	SW	\$B
+10	+0.6	+63	+111	+19	+41	+0.44	+0.83	+0.018	+60	+131

• WW-95 YW-99

• Mogul out of the Rachel cow family. His dam is tall, wide and deep with many full sisters in the herd. They are all very alike.

47**GB Acclaim A17J**

BD: 1/18/21

Reg No: 20258601

Birth Wt.

98

Adj. 205

723

Adj. 365

1318

Scrotal

36.68

ADG

3.72

JINDRA 3RD DIMENSION
JINDRA ACCLAIM
JINDRA BLACKBIRD LASSY 1111

ANGUS ALC TANGO B18T
GB HAZEL T17Y
ALC HAZEL G16U

JINDRA DOUBLE VISION
JINDRAS SAPPHIRE J 417
CONNEALY IMPRESSION
JINDRAS ENCHANTRESS J 102
E&B 1680 PRECISION 1023
ALC BALDRIDGEFOREVERLADY847J
C A FUTURE DIRECTION 5321
ALC HAZEL L12L

CED	BW	WW	YW	Milk	CW	Marb	RE	Fat	SW	\$B
-3	+5.5	+76	+130	+26	+81	+0.29	+0.59	-0.037	+64	+175

• WW-106 YW-103

• Largest framed bull in the sale.



GB HAZEL B17B - DAM OF LOT 48

48**GB Nikon N17J**

BD: 2/8/21

Reg No: 20258632

Birth Wt.

92

Adj. 205

687

Adj. 365

1257

Scrotal

37.04

ADG

3.56

KOUPALS B&B NIKON 5035
 KOUPALS B&B NIKON 7020
 B&B BLKBD PROGRESS 4089
 CONNEALY BISMARK 203 4786
 GB HAZEL B17B
 GB HAZEL T17Y

S A V HARVESTOR 0338
 B&B ERICA 605
 ELLINGSON FINAL ANSWER 0026
 B&B BLKBD PROGRESS 108
 S A V BISMARK 5682
 BLACK CRANE OF CONANGA 204
 ALC TANGO B18T
 ALC HAZEL G16U

CED	BW	WW	YW	Milk	CW	Marb	RE	Fat	SW	SB
+3	+3.8	+68	+120	+19	+57	+0.59	+0.86	-0.040	+53	+155

• WW-100 YW-98

• Another big framed bull out of the same cow family as Lot 47. 6.5 to 7 frame cow.

49**GB Active Duty K05J**

BD: 2/4/21

Reg No: 20258612

Birth Wt.

85

Adj. 205

737

Adj. 365

1268

Scrotal

39.32

ADG

3.32

R B ACTIVE DUTY 010
 KOUPALS B&B ACTIVE DUTY 6117
 B&B TESS 9045
 VISION ROYAL FLUSH 1422
 GB RACHEL R05E
 GB RACHEL I05Y

LCC NEW STANDARD
 B A LADY 6807 305
 CONNEALY THUNDER
 B&B TESS 3055
 GAMBLER ROYAL FLUSH
 VISION SILVER 832
 ALC IN FOCUS I21U
 GB RACHEL F04W

CED	BW	WW	YW	Milk	CW	Marb	RE	Fat	SW	SB
+2	+4.3	+67	+110	+29	+41	+0.13	+0.25	-0.019	+68	+91

• WW-108 YW-100

50**GB Active Duty K06J**

BD: 2/13/21

Reg No: 20258613

Birth Wt.

89

Adj. 205

727

Adj. 365

1252

Scrotal

36.60

ADG

3.28

R B ACTIVE DUTY 010
 KOUPALS B&B ACTIVE DUTY 6117
 B&B TESS 9045
 WORTHINGTON BREAKOUT
 GB ENCHANTRESS B06E
 DIAMOND ENCHANTRESS 6C26

LCC NEW STANDARD
 B A LADY 6807 305
 CONNEALY THUNDER
 B&B TESS 3055
 MCC DAYBREAK
 G A R OBJECTIVE 9J14
 HOOVER DAM
 DIAMOND ENCHANTRESS S215

CED	BW	WW	YW	Milk	CW	Marb	RE	Fat	SW	SB
+4	+2.1	+65	+99	+28	+32	+0.55	+0.84	-0.005	+78	+113

• WW-106 YW-98

52**GB Active Duty X04J**

BD: 2/19/21

Reg No: 20258637

Birth Wt.

78

Adj. 205

688

Adj. 365

1203

Scrotal

36.61

ADG

3.22

R B ACTIVE DUTY 010
 GMAR ACTIVE DUTY F129
 GMAR IMAGE MAKER X306
 S A V WIND CHILL 3442
 GB RACHEL C04C
 GB RACHEL F04X

LCC NEW STANDARD
 B A LADY 6807 305
 H A IMAGE MAKER 0415
 GMAR ALLIANCE 6290
 APEX WINDY 078
 S A V BLACKCAP MAY 4136
 S A V FINAL ANSWER 0035
 ALC RACHEL N04T

CED	BW	WW	YW	Milk	CW	Marb	RE	Fat	SW	SB
+12	-0.4	+53	+83	+33	+23	+0.18	+0.15	+0.040	+71	+70

• WW-100 YW-94

• Out of one of my favorite females in the herd. Stacked with female matriarchs in this pedigree.

• Dams NR-5@110

53 GB Advocate A66J

BD: 1/31/21

Reg No: 20245624

Birth Wt.

84

Adj. 205

658

Adj. 365

1132

Scrotal

36.00

ADG

3.27

KG JUSTIFIED 3023
M R A ADVOCATE 9035
M R A BLACKBIRD 6362

BASIN PAYWEIGHT 1682
SUA PAYWEIGHT EXPSUNSET 7366
SUA EXPECTATION SUNSET U8400

CONNEALY JUDGMENT
KG MISS MAGIC 1443
CONNEALY ARSENAL 2174
MRA BLACKBIRD 0072
BASIN PAYWEIGHT 0065
21AR O LASS 7017
G A R EXPECTATION 6901
S U A 616 SUNSET 9110

CED	BW	WW	YW	Milk	CW	Marb	RE	Fat	\$W	\$B
+7	+0.7	+64	+117	+31	+37	+0.65	+0.31	+0.040	+72	+126

• Here is a son of Advocate 9035, a young sire that had his first calves selling this past fall and in the spring sales of 2022. You will appreciate the great foot structure, depth of rib that Advocate blends with the Payweight and Sunset cow family on the bottom of the pedigree.



M R A ADVOCATE 9035 - SIRE OF LOT 53

54 GB Pathfinder P79J

BD: 1/31/21

Reg No: 20259805

Birth Wt.

81

Adj. 205

657

Adj. 365

1265

Scrotal

36.03

ADG

3.80

LT ENTERPRISE 5213
KOUPLS B&B PATHFINDER 8106
B&B BLKBD PROGRESS 3015

ANGUS
DIAMOND GENERATION 41D2
GB RACHEL V79G

GB RACHEL A79E

CONNEALY CAPITALIST 028
LT ERICA 0121
KOUPLS B&B IDENTITY
B&B BLKBD PROGRESS 0049
V A R GENERATION 2100
DIAMOND JANNET 701B
KOUPLS B&B ATLAS 4061
ALC RACHEL S79T

CED	BW	WW	YW	Milk	CW	Marb	RE	Fat	\$W	\$B
+7	+1.4	+68	+115	+22	+40	+0.36	+0.58	+0.042	+72	+117

• Uniform Pathfinder son with a good hip. Moderate in frame

55 GB Bomber B41J

BD: 1/30/21

Reg No: 20258602

Birth Wt.

77

Adj. 205

652

Adj. 365

1263

Scrotal

34.99

ADG

3.82

KM BROKEN BOW 002
CASINO BOMBER N33
CASINO ANNIE K48

ANGUS
ICC PAY RAISE 4886
GB BLACKCAP Y41G

GB BLACKCAP R41A

SUMMITCREST COMPLETE 1P55
SUMMITCREST PRINCESS 0P12
DPL UPWARD L70
CASINO ANNIE G64
MILL COULEE PAY RAISE
ICC BLACKBIRD 0739
VISION ROYAL FLUSH 1422
ALC BLACKCAP J56T

CED	BW	WW	YW	Milk	CW	Marb	RE	Fat	\$W	\$B
+14	-0.7	+69	+113	+29	+51	+0.54	+0.62	+0.038	+83	+132

• This bull will work great on heifers

56 GB Generation G90J

BD: 1/20/21

Reg No: 20258609

Birth Wt.

76

Adj. 205

659

Adj. 365

1221

Scrotal

31.67

ADG

3.51

DIAMOND GENERATION 41D2
GB GENERATION G12G
GB BLACKCAP A12E

ANGUS
S WHITLOCK 179
GB PAMELA W90G

RC PAMELA 904

V A R GENERATION 2100
DIAMOND JANNET 701B
KOUPLS B&B ATLAS 4061
GB BLACKCAP 2712
S CHISUM 6175
S PRIDE ANNA 709
CONNEALY CONSENSUS 7229
BASIN PAMELA 6608

CED	BW	WW	YW	Milk	CW	Marb	RE	Fat	\$W	\$B
+7	+2.2	+76	+133	+26	+47	+0.93	+0.41	+0.058	+78	+139

• This bull has a lot of potential. Out of a very feminine deep bodied first calf heifer bred to our G12G Lot 1 standout in 2020. Don't miss this one.

57 GB Generation G66J

BD: 1/10/21

Reg No: 20264011

Birth Wt.

74

Adj. 205

619

Adj. 365

1205

Scrotal

36.35

ADG

3.69

DIAMOND GENERATION 41D2
GB GENERATION G12G
GB BLACKCAP A12E

ANGUS
KOUPLS B&B NIKON 7020
GB PRINCESS N66G

GB PRINCESS U66C

V A R GENERATION 2100
DIAMOND JANNET 701B
KOUPLS B&B ATLAS 4061
GB BLACKCAP 2712
KOUPLS B&B NIKON 5035
B&B BLKBD PROGRESS 4089
VISION UNANIMOUS 1418
ALC PRINCESS Y66T

CED	BW	WW	YW	Milk	CW	Marb	RE	Fat	\$W	\$B
+1	+3.7	+71	+114	+16	+36	+0.39	+0.48	-0.006	+61	+105

58 GB Mogul M79J

BD: 3/5/21

Reg No: 20258629

Birth Wt.

75

Adj. 205

725

Adj. 365

1229

Scrotal

37.24

ADG

3.15

LD CAPITALIST 316
BROOKDALE MOGUL
BROOKDALE ZARA 597

ANGUS
BROOKDALE CUT UP 644
GB LASS P78E

V D A R LASS 2578

CONNEALY CAPITALIST 028
LD DIXIE ERICA 2053
JMB TRACTION 292
BROOKDALE ZARA 229
D R SIERRA CUT 7404
BROOKDALE PROGRESS 371
CROOK MT WINDY 17
V D A R LASS 8808

CED	BW	WW	YW	Milk	CW	Marb	RE	Fat	\$W	\$B
+12	-0.7	+55	+94	+29	+38	-0.06	+0.65	+0.013	+68	+98

• This March born Mogul bull calf could be the steal of the sale. Goes back to VDAR Lass 8808, one of Van Dykes most prominent cows and Brookdale Progress 371, one of Brookdale's most prominent donors.

59 GB Generation X41J

BD: 2/19/21

Reg No: 20259808

Birth Wt.

82

Adj. 205

729

Adj. 365

1236

Scrotal

33.30

ADG

3.17

DIAMOND GENERATION 41D2
GB GENERATION G12G
GB BLACKCAP A12E

ANGUS
BROOKDALE CUT UP 644
GB BLACKCAP P41E

GB BLACKCAP B41W

V A R GENERATION 2100
DIAMOND JANNET 701B
KOUPLS B&B ATLAS 4061
GB BLACKCAP 2712
D R SIERRA CUT 7404
BROOKDALE PROGRESS 371
ALC TANGO B18T
ALC BLACKCAP J56T

CED	BW	WW	YW	Milk	CW	Marb	RE	Fat	\$W	\$B
+7	+0.8	+62	+103	+32	+47	+0.76	+0.68	+0.019	+79	+141



60

GB Active Duty X62J

BD: 2/12/21

Reg No: 20258639

R B ACTIVE DUTY 010
KROUPALS B&B ACTIVE DUTY 6117
B&B TESS 9045

ANGUS

KROUPALS B&B ATLAS 4061
GB TREASURE A62E
GB TREASURE C62A

LCC NEW STANDARD
B A LADY 6807 305
CONNEALY THUNDER
B&B TESS 3055
R B ACTIVE DUTY 010
B&B TESS 9045
CONNEALY CONSENSUS 7229
ALC TREASURE C50P

Birth Wt.
91

Adj. 205
674

Adj. 365
1272

Scrotal
36.07

ADG
3.74

CED	BW	WW	YW	Milk	CW	Marb	RE	Fat	\$W	\$B
+7	+1.9	+64	+112	+23	+39	+0.31	+0.49	-0.045	+64	+122

61

GB Nikon N08J

BD: 2/18/21

Reg No: 20258631

KROUPALS B&B NIKON 5035
KROUPALS B&B NIKON 7020
B&B BLKBD PROGRESS 4089

ANGUS

H A R B WINDY 702 JH
GB ERICA Y08A
BROOKDALE ERICA 408

S A V HARVESTOR 0338
B&B ERICA 605
ELLINGSON FINAL ANSWER 0026
B&B BLKBD PROGRESS 108
A A R REALLY WINDY 1205
H A R B BLACK LADY 073 J H
RDH BEST OF DATELINE
RED BARN ERICA 963

Birth Wt.
71

Adj. 205
708

Adj. 365
1255

Scrotal
34.58

ADG
3.42

CED	BW	WW	YW	Milk	CW	Marb	RE	Fat	\$W	\$B
+2	+3.6	+69	+113	+18	+37	+0.15	+0.56	-0.015	+56	+99

62 GB Generation G44J

BD: 2/12/21

Reg No: 20259804

Birth Wt.

DIAMOND GENERATION 41D2
GB GENERATION G12G
GB BLACKCAP A12E

ANGUS

ICC PAY RAISE 4886
GB SPECIAL LADY Y43F
GB SPECIAL LADY S43D

V A R GENERATION 2100
DIAMOND JANET 701B
KOUPLS B&B ATLAS 4061
GB BLACKCAP 2712
MILL COULEE PAY RAISE
ICC BLACKBIRD 0739
S CHISUM 6175
ALC SPECIAL LADY P43U

86
Adj. 205
645
Adj. 365
1232
Scrotal
32.91
ADG
3.67

CED	BW	WW	YW	Milk	CW	Marb	RE	Fat	\$W	\$B
+2	+2.5	+75	+126	+30	+52	+0.51	+0.63	+0.016	+86	+136

**63 GB Pathfinder P04J**

BD: 1/26/21

Reg No: 20258633

Birth Wt.

LT ENTERPRISE 5213
KOUPLS B&B PATHFINDER 8106
B&B BLKBD PROGRESS 3015

ANGUS

BARSTOW CASH
GB RACHEL H04G
ALC RACHEL N04T

CONNELLY CAPITALIST 028
LT ERICA 0121
KOUPLS B&B IDENTITY
B&B BLKBD PROGRESS 0049
SITZ DASH 10277
BARSTOW QUEEN W16
B/R NEW FRONTIER 095
ALC RACHEL G07J

69
Adj. 205
623
Adj. 365
1268
Scrotal
38.37
ADG
4.03

CED	BW	WW	YW	Milk	CW	Marb	RE	Fat	\$W	\$B
+6	+0.8	+82	+148	+25	+66	+0.79	+0.70	+0.014	+83	+167

64 GB Mogul M73J

BD: 1/17/21

Reg No: 20258628

Birth Wt.

LD CAPITALIST 316
BROOKDALE MOGUL
BROOKDALE ZARA 597

ANGUS

KOUPLS B&B NIKON 7020
GB BLACKCAP N73G
GB BLACKCAP T73D

CONNELLY CAPITALIST 028
LD DIXIE ERICA 2053
JMB TRACTION 292
BROOKDALE ZARA 229
KOUPLS B&B NIKON 5035
B&B BLKBD PROGRESS 4089
R B TOUR OF DUTY 177
GB BLACKCAP T71Y

74
Adj. 205
583
Adj. 365
1169
Scrotal
30.58
ADG
3.66

CED	BW	WW	YW	Milk	CW	Marb	RE	Fat	\$W	\$B
+8	-0.3	+60	+108	+32	+44	+0.72	+0.72	+0.031	+74	+137

65 GB Metallic M56J

BD: 1/27/21

Reg No: 20258625

Birth Wt.

CONNELLY FULL METAL
KOUPL'S B&B METALLIC 6018
B&B BLACKCAP 0068

ANGUS

BRUIN UPROAR 0070
GB BEAUTY U56D
GB BEAUTY 2056

CONNELLY CONSENSUS 7229
BRANDI OF CONANGA 9594
KOUPLS B&B MARATHON 8031
B&B BLACKCAP 8104
SITZ UPWARD 307R
FALCON BLACKBIRD 6071
H A R B DENALI 788 J H
METZGER BEAUTY 550

94
Adj. 205
617
Adj. 365
1105
Scrotal
36.90
ADG
3.05

CED	BW	WW	YW	Milk	CW	Marb	RE	Fat	\$W	\$B
+4	+1.7	+55	+91	+14	+33	+0.45	+0.59	+0.010	+44	+121

66 GB Presidential P49J

BD: 2/1/21

Reg No: 20267145

Birth Wt.

S A V PRESIDENT 6847
BROOKDALE PRESIDENTIAL 1059
BROOKDALE PROGRESS 371

WAR UPWARD X215 T115
GB EILEENMEER W49B
GB EILEENMEER U49

COLEMAN CHARLO 0256
S A V BLACKCAP MAY 4136
SITZ UPWARD 307R
BROOKDALE PROGRESS 422
SITZ UPWARD 307R
WAR RITO T115 416 4257
MYTTY IN FOCUS
GB EILEENMEER S27

88
Adj. 205
547
Adj. 365
1131
Scrotal
35.03
ADG
3.65

CED	BW	WW	YW	Milk	CW	Marb	RE	Fat	\$W	\$B
+4	+2.3	+57	+103	+25	+43	+0.45	+0.65	-0.005	+55	+122

67 GB Pathfinder P50J

BD: 2/1/21

Reg No: 20260772

Birth Wt.

LT ENTERPRISE 5213
KOUPLS B&B PATHFINDER 8106
B&B BLKBD PROGRESS 3015

ANGUS

BASIN PAYWEIGHT 1682
GB MAYFLOWER P50G
MAR MAYFLOWER OF 2417 5022

CONNELLY CAPITALIST 028
LT ERICA 0121
KOUPLS B&B IDENTITY
B&B BLKBD PROGRESS 0049
BASIN PAYWEIGHT 0065
21AR O LASS 7017
WERNER WAR PARTY 2417
RIVER HILLS MAYFLOWER T405

78
Adj. 205
568
Adj. 365
1258
Scrotal
39.06
ADG
4.31

CED	BW	WW	YW	Milk	CW	Marb	RE	Fat	\$W	\$B
+11	+1.0	+68	+131	+41	+57	+0.21	+0.74	+0.037	+88	+129



68 GB Generation G05J

BD: 1/25/21

Reg No: 20260596

Birth Wt.

DIAMOND GENERATION 41D2									
GB GENERATION G11G									
PONCA CREEK BLACKBIRD 711									
ANGUS KOUPLS B&B ACTIVE DUTY 6117									
GB RACHEL M04G									
GB RACHEL C04D									
V A R GENERATION 2100									
DIAMOND JANNET 701B									
WOODHILL DAYBREAK U280-X20									
PONCA CREEK BLACKBIRD 955									
R B ACTIVE DUTY 010									
B&B TESS 9045									
S A V WIND CHILL 3442									
GB RACHEL 2004									

74
Adj. 205
567
Adj. 365
1130
Scrotal
35.33
ADG
3.52

CED	BW	WW	YW	Milk	CW	Marb	RE	Fat	\$W	\$B
+4	+0.9	+69	+123	+22	+53	+0.55	+0.58	+0.005	+65	+140

69 GB Crackerjack J87J

BD: 1/6/21

Reg No: 20258611

Birth Wt.

MUSGRAVE 316 STUNNER									
MUSGRAVE CRACKERJACK									
MUSGRAVE RITO JET A649									
ANGUS JINDRA ACCLAIM									
GB PRIDE A87G									
GB PRIDE L87A									
LD CAPITALIST 316									
MCATL BLACKBIRD 831-1378									
MUSGRAVE BIG SKY									
G C F MISS NEW LEVEL R216									
JINDRA 3RD DIMENSION									
JINDRA BLACKBIRD LASSY 1111									
S A V PARAMOUNT 0115									
BROOKDALE PRIDE 887									

69
Adj. 205
557
Adj. 365
1098
Scrotal
34.23
ADG
3.38

CED	BW	WW	YW	Milk	CW	Marb	RE	Fat	\$W	\$B
+11	-1.5	+50	+88	+29	+29	+0.69	+0.37	+0.007	+60	+122

2-Year-Old Angus Bulls

70 GB Cut UP P16H

BD: 3/9/20

Reg No: 19944204

Birth Wt.

D R SIERRA CUT 7404									
BROOKDALE CUT UP 644									
BROOKDALE PROGRESS 371									
ANGUS V D A R REALLY WINDY 1523									
GB TREASURE V16C									
GB TREASURE C15A									
G A R RETAIL PRODUCT									
D R DOBRA 3453									
SITZ UPWARD 307R									
BROOKDALE PROGRESS 422									
V D A R REALLY WINDY 4097									
V D A R LASS 8808									
CONNEALY CONSENSUS 7229									
ALC TREASURE C50P									

86
Adj. 205
600
Adj. 365
—
Scrotal
—
ADG
—

CED	BW	WW	YW	Milk	CW	Marb	RE	Fat	\$W	\$B
+1	+2.2	+66	+113	+30	+44	+0.79	+0.49	-0.002	+77	+135

I really like this 2 year old bull. We decided to keep a few of our March calves for two year old bulls last year. Was hard not getting rid of him last year. The last son of Cut Up we will sell. This Treasure cow is the real deal going back to C15A and a VDAR Really Windy bull that made great females.

72 GB Black Diamond B41H

BD: 3/24/20

Reg No: Pending

Birth Wt.

DIAMOND IN THE ROUGH									
DDOT BLACK DIAMOND 0C94									
DIAMOND TROJAN ERICA 0824									
CONNEALY CONSENSUS 7229									
SUA CONSENSUS SUNSET 410									
SUA EXPECTATION SUNSET U8402									
DIAMOND JUSTICE 901S									
DIAMOND BLACK LADY 7206									
21AR ROUNDUP 7005									
DIAMOND TROJAN ERICA 2U04									
CONNEALY CONSENSUS									
BLUE LILLY OF CONANGA 16									
G A R EXPECTATION 6901									
S U A 616 SUNSET 9110									

84
Adj. 205
635
Adj. 365
—
Scrotal
—
ADG
—

CED	BW	WW	YW	Milk	CW	Marb	RE	Fat	\$W	\$B
-	-	-	-	-	-	-	-	-	-	-

I was not able to get this bull registered in time for the sale so will sell as commercial. We picked up 2 flush sisters at the Spear U dispersal sale. Both are going to be good additions to our herd.



71 GB Commander X19H

BD: 2/11/20

Reg No: 20262095

Birth Wt.

VINTAGE COMMANDER 4152									
KOUPLS B&B COMMANDER 7068									
B&B ERICA 605									
KOUPL'S B&B METALLIC 6018									
GB QUEEN PEGGY K15F									
GB QUEEN PEGGY F15A									
RITO 9M25 OF RITA 5F56 PRED									
SANDPOINT BLACKBIRD 8809									
G A R EXALTATION 3144									
B&B ERICA 4064									
CONNEALY FULL METAL									
B&B BLACKCAP 0068									
S A V FINAL ANSWER 0035									
GB QUEEN PEGGY T15Y									

83
Adj. 205
594
Adj. 365
1048
Scrotal
—
ADG
2.84

CED	BW	WW	YW	Milk	CW	Marb	RE	Fat	\$W	\$B
+8	+2.4	+57	+95	+26	+48	+0.68	+0.66	+0.039	+57	+137

These two year old bulls speak for themselves.



Outstanding Bred Heifers

**A good friend and customer
of Graesser Bros.,
Craig Thieman, will be
selling an outstanding set
of bred heifers
Al'd to Brookdale Mogul**

**For more information:
Craig Thieman
605-840-9833**

48 head

AI to calve March 3 – March 16

9 head

Bull bred to calve March 17 to April 9

9 head

Bull bred to calve April 10 to April 25

**Ultrasound tested on August 18, 2021
by Animal Clinic of Winner.
August 18, 2021 - 1st Guardian Scour
Guard shot. Second Guardian on
January 31, 2022**



Brookdale Mogul

Buyer's Sale Week Special

For Semen orders call Derek 605-830-0788

\$15
/Straw

B
R
O
O
K
D
A
L
E

M
O
G
U
L



Reg: AAA *19550403

Connealy Capitalist 028

LD Capitalist 316

SIRE

LD Dixie Erica 2053

JMB Traction 292

Brookdale Zara 597

DAM

Brookdale Zara 229





29933 329th Ave.
Dallas, SD 57529

FIRST CLASS MAIL
U.S. POSTAGE
PAID
PHILIP, SD
PERMIT NO. 20

First Class Mail

Address Service Requested

